

* * *

NANA REGIONAL CORPORATION BUSY ON BIG DEVELOPMENTS, PIPELINE RELATED CONTRACTS

Reprinted from
All-Alaska Weekly, June 27, 1975

NANA Regional Corporation with headquarters in Kotzebue has been busy with development projects for the past several months.

The corporation's hotel division opened in April a \$2,250,000 53-room hotel, the Nul-luk-vik, in Kotzebue.

The hotel has a dining room, bar, and gift shop, and houses the headquarters of the corporation.

The hotel division also purchased the 30-room, Drift Inn, and is now in the process of converting 12 of those rooms into apartments, an extremely scarce item in that northern city.

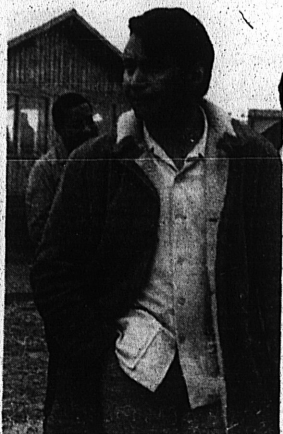
It also is in the process of opening two smaller hotels for a couple of village corporations in Noorvik and Kiana.

The hotels are new construction camps, Atko units, with sleepers, dining rooms, and kitchens which were purchased from Fairbanks Builders.

The Bureau of Indian Affairs is involved along with the regional corporation and the village corporations on these ventures.

On a regional basis, the NANA corporation took on the problem of assuring adequate fuel supply. In four instances, the regional corporation assisted the village corporations to become retail fuel distributorships. In three other cases it made funds available to existing ANICA stores so they could purchase additional tankage.

"At least we have taken care of the situation so we don't feel we will have any fuel shortage this coming year," said John



JOHN SCHAEFFER heads NANA Corporation.

Schaeffer, of NANA.

One of the most lucrative divisions of NANA is its security division which has a \$15 million plus contract with Alyeska Pipeline Service Co. for camps north of the Yukon. Its security headquarters is in Fairbanks in the Caribou Building.

The corporation also has a Jade Mountain Division which has jade claims in the Brooks Range and is slated to manufacture jade items

(Continued on Page 6)

NANA Corporation...

(Continued From Page 1)

locally.

The Tupik Building Supply Division will open this summer. The corporation is presently building a store and warehouse and at first will sell building supplies and camping equipment. Later on, it hopes to go into the manufacture of homes.

NANA has joined with Commercial Catering of Anchorage in a joint venture with a subcontract from Greyhound Support Services Inc. for one camp only at Sheep Creek on the southern portion of the pipeline route.

Recently NANA has received a contract from Fluor to provide labor services to all the pump stations during their construction.

NANA Reindeer is a non-profit corporation formed by NANA

and three village corporations, Kotzebue, Noatak, and Kivalina, in an attempt to foster reindeer herding as a profit-making operation.

Although NANA Construction has been in operation only two months, it has several jobs: \$95,000 in construction work for the regional corporation; a \$1.8 million state school project at Kivalina; a \$2.5 million job in Anchorage for the FAA; a \$280,000 renovation job for Alaska Psychiatric Institute in Anchorage.

"We don't feel we have reached our limit yet. But we are looking at proposed projects more carefully now. The availability of skilled management is really beginning to become a limiting factor," said Schaeffer.