

**16MM FEATURE FILMS**

**THE BEST, THE NEWEST**  
for your village movie shows  
write **DICK NORMAN**  
at

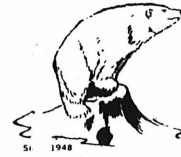
**PICTURES, INC.**

811 W. 8th Ave., Anchorage  
—Serving Alaska Since 1939—

**ATHLETIC SUPPLIER****WE SHIP THROUGHOUT ALASKA****ALL NAME BRANDS IN ATHLETIC EQUIPMENT**

Hockey Equipment      Figure Skates  
Cross Country Ski Equipment      Ballet, Tap and Acrobatic Shoes  
Roller Skates      Body Building Equipment  
Racquet Ball Equipment      Team Jackets  
We welcome team orders.      Bush orders welcome.

**CALL OR WRITE:**      **Hours:**  
**CHAMPIONS CHOICE**      274-4755      10-8 Monday - Friday  
Geneva Woods Shopping Center      9-5 Saturday  
3700 Old Seward Highway      12-5 Sunday  
Anchorage, Alaska 99503

**Alaska's No. 1 Native Cooperative****Membership Information Available****ANICA, INC.**

**1801 - W. 48th Ave**  
**Anchorage, Alaska**

**274-8433****278-1141****GENERAL CONTRACTORS**

- DRILL PILINGS
- CAT TRAINING
- CRANE WORK
- EQUIPMENT RENTING



**eskimos, inc.**  
852-7766  
or  
852-7922

- AIRCRAFT LOADING
- HOUSE MOVING
- GRAVEL HAUL & SALES
- FUEL HAUL

TELEX ARCOPR (AHG) 090-26-5  
P.O. BOX 536, BARROW - AK 99723

**LICENSED  
AND  
BONDED**

**JACKOVICH  
TRACTOR  
& EQUIPMENT CO.**

**Machinery & Supplies For All Alaska****JACKOVICH CONSTRUCTION SUPPLIES**

- ◆ ARMCO STEEL -
- ◆ WIRE ROPE -
- ◆ SLINGS & RIGGING
- ◆ ESCO -
- ◆ CUTTING EDGES, BUCKETS
- ◆ RIPPER TEETH
- ◆ GOODYEAR & TRELLEBORG
- ◆ INDUSTRIAL HOSE -
- ◆ FITTINGS
- ◆ EMERY INDUSTRIES
- ◆ SYNTHETIC OILS
- ◆ JEFFRIES CONVEYOR
- ◆ ACCESSORIES
- ◆ CONVEYOR BELTING
- ◆ RUFCO
- ◆ REINFORCED PLASTIC
- ◆ SHEETING
- ◆ THE CORDAGE GROUP
- ◆ MANILA - POLY - NYLON
- ◆ CROSBY LAUGHLIN
- ◆ SHACKLES
- ◆ HOOKS
- ◆ BLOCKS
- ◆ CAMPBELL CHAIN
- ◆ TRUCK & TIE DOWN
- ◆ STRATOFLEX
- ◆ HYDRAULIC HOSE-FITTINGS
- ◆ LUBRIPLATE
- ◆ OILS & LUBRICANTS
- ◆ LINCOLN
- ◆ GREASE EQUIPT. & PUMPS
- ◆ MIDLAND CENTRIFUGAL
- ◆ TRASH PUMPS
- ◆ STIHL CHAIN SAWS
- ◆ SALES & SERVICE
- ◆ WIGGENS EXCAVATION
- ◆ SYSTEMS
- ◆ MONSANTO (BIDIM)
- ◆ SOIL STABILIZATION FABRIC

**" TWO LOCATIONS TO SERVE YOU "****FAIRBANKS****456-4414**

ARR INDUSTRIAL AREA

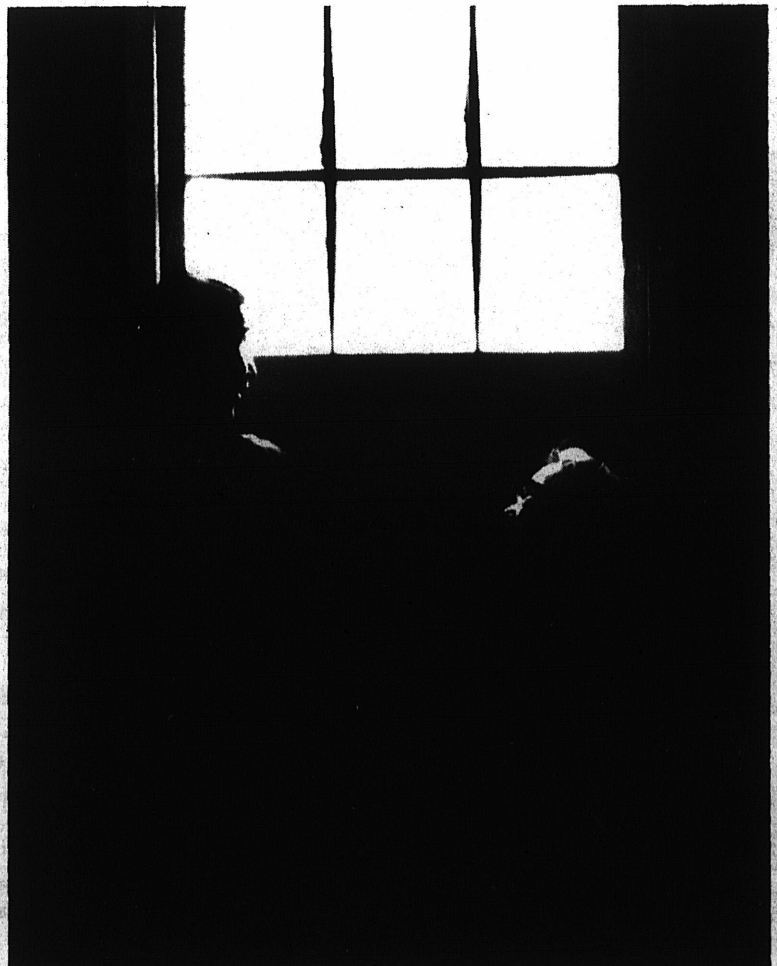
**ANCHORAGE****277-1406**

1716 POST ROAD

You no longer need to go to Seattle, New York, or L.A. for top-of-the line commercial photography. Our clients include Time/Life, Newsweek, Paris Match, Geo, and many others.

Let us help you with your advertising/public relations, news/documentary, and industrial/commercial needs.

commercial photographers

**stapleton/klamser & associates**

p.o. box 540, anchorage, alaska 99510 (907) 279-2153