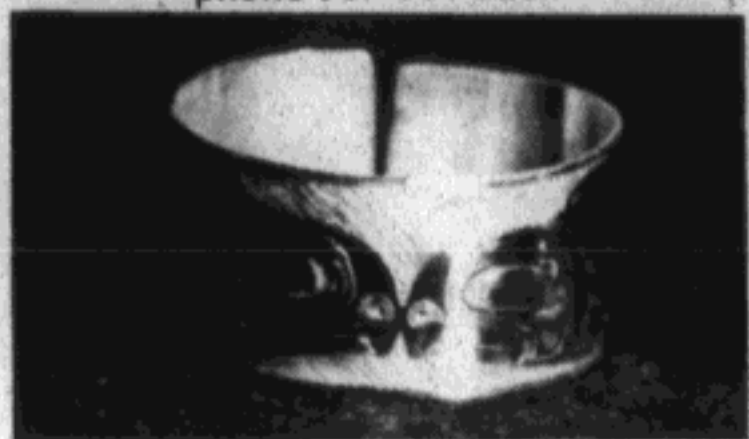




N.W. Coast Native Artists

Jennifer L. Brady • Sitka
Richard D. Booth • Metlakatla

P.O. Box 5075 Anchorage, Alaska 99510
phone-907-561-3281



Fine Silver Jewelry • Silkscreen Prints • Woodcarvings

\$\$\$\$\$SAVE\$\$\$\$\$

20% to 40% Savings! on GROCERIES SHIPPED to YOU

... NO FREIGHT CHARGES ...

send for free price list and compare

Alaska Regional Sales

P.O. Box 210208

Anchorage, Alaska 99521

or call

337-6024



Theresa, Sonya, Maria, Matt, and Bob Charles

Bob CHARLES

REPRESENTATIVE

for the Yukon-Kuskokwim Delta

I'm born and raised in the delta region, and know and understand the needs, the issues, the problems we are faced with. I have worked with villages and the legislature on ways to address them over the last ten years. The delta region needs a person that has the experience, knowlege, and understanding to represent the region in the legislature.

Paid for by Bob Charles for State House, Michael Chase, Chairman.
P.O. Box 1084 Bethel, Alaska 99559, 543-2358

Alaska News Nightly



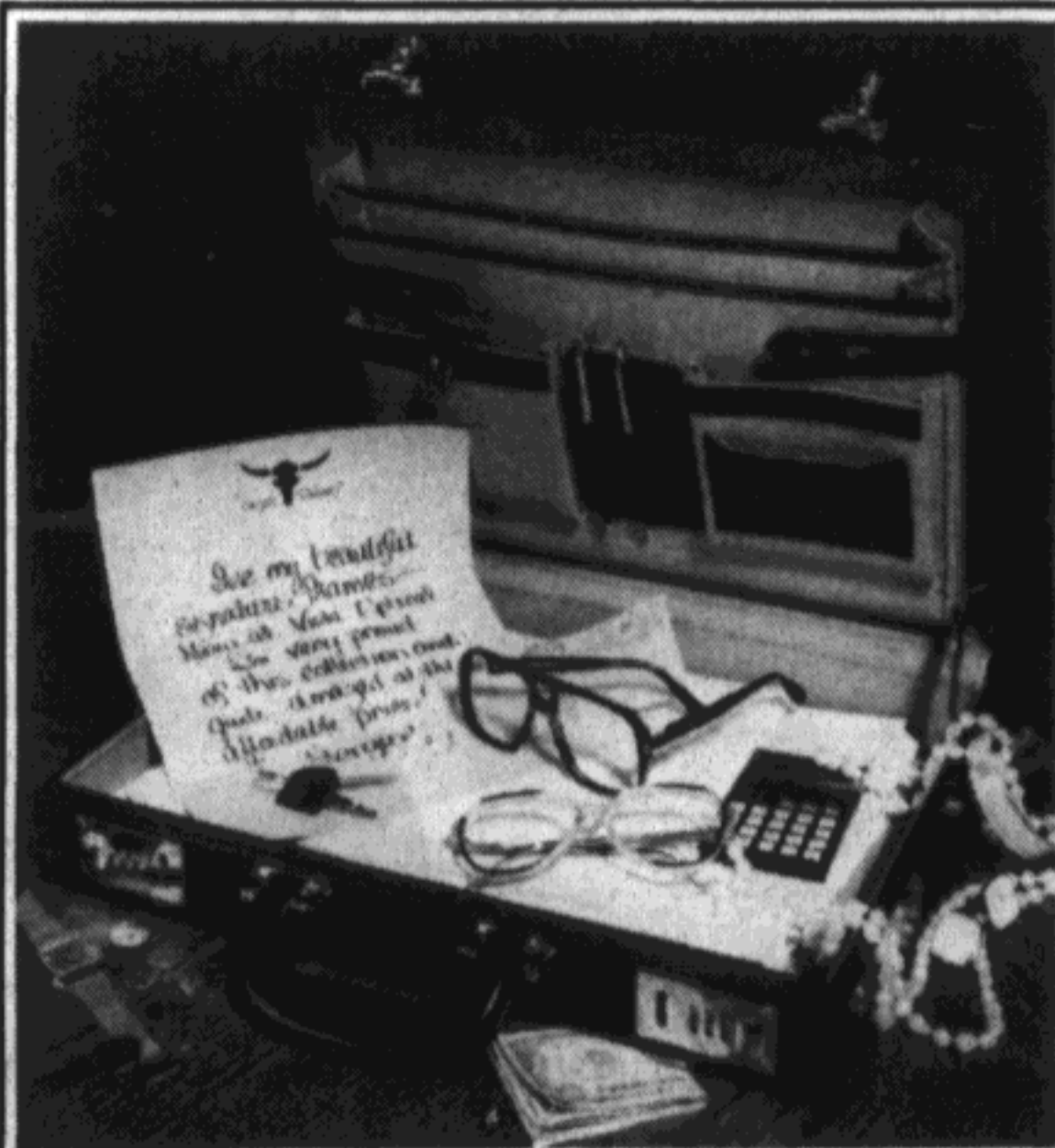
Our Network News Team draws on something even more advanced than our satellite technology

If it happens in Alaska, we'll hear it first. Our Alaska Public Radio news team draws from a statewide network of news professionals. You'll get the story as no other source can report it, because living close to the news means a richer understanding of it. Count on us each week night to bring you closer to the news-- statewide.

Tonight--on your local public radio station

Alaska News Nightly

APRN VOICES OF ALASKA



Sergio Valente Designer Eyeglasses

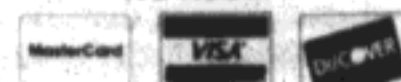
\$69.95 Complete*

Daily Wear
Soft Contacts*
\$69.95

ONE
DAY
SERVICE

VISTA OPTICAL OF ALASKA

WE ACCEPT



AN
AMERICAN
VISION PLAN
INSURANCE
PROVIDER

ANCHORAGE
University Center
EAGLE RIVER
Valley River Center

3701 E. Tudor Rd. 561-7330
3901 Old Seward Hwy. #27E 563-2131
12001 Business Blvd. #10 694-4743

Fred Meyer ONE STOP SHOPPING CENTERS

ANCHORAGE
2000 W. Dimond Blvd. 522-1516
1000 E. Northern Lights Blvd. 279-8651

*Certain limitations apply. Must purchase frames plus plastic lenses, to ±3,000. FT 25 bifocals \$15.00 additional.