



The utilidor is buried under the streets of Browerville as phase one of construction hits full swing.

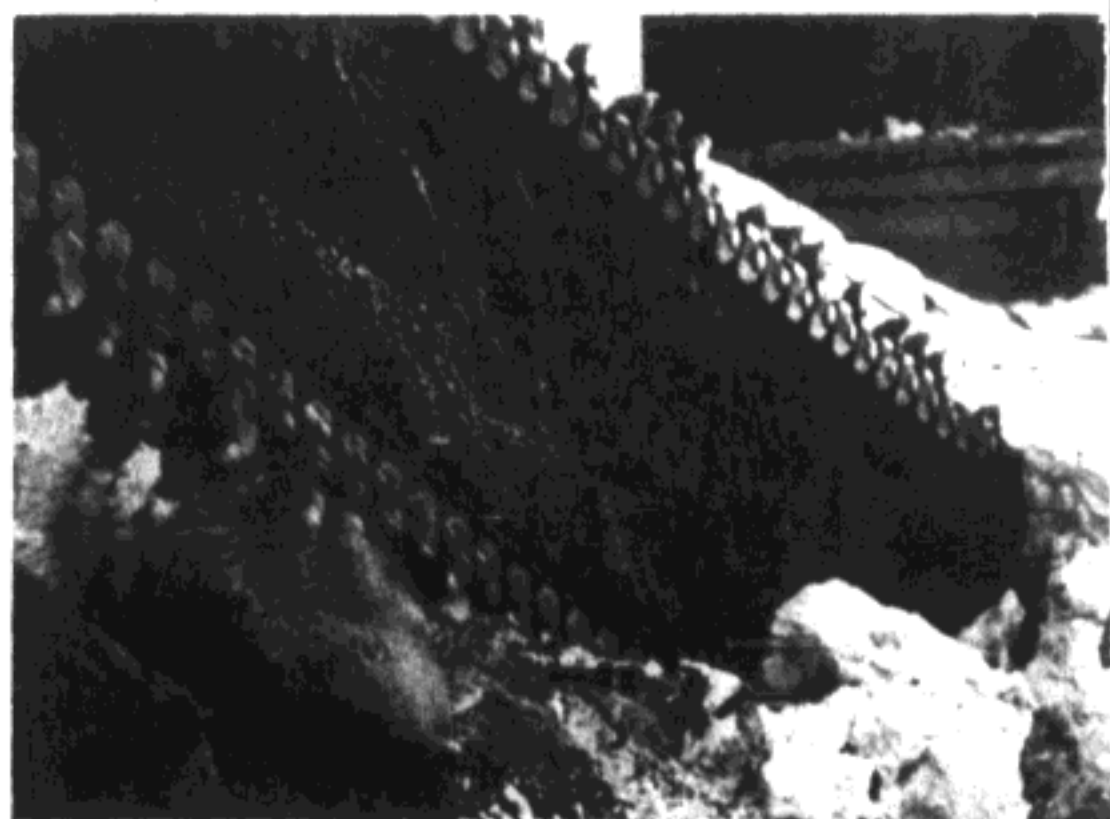
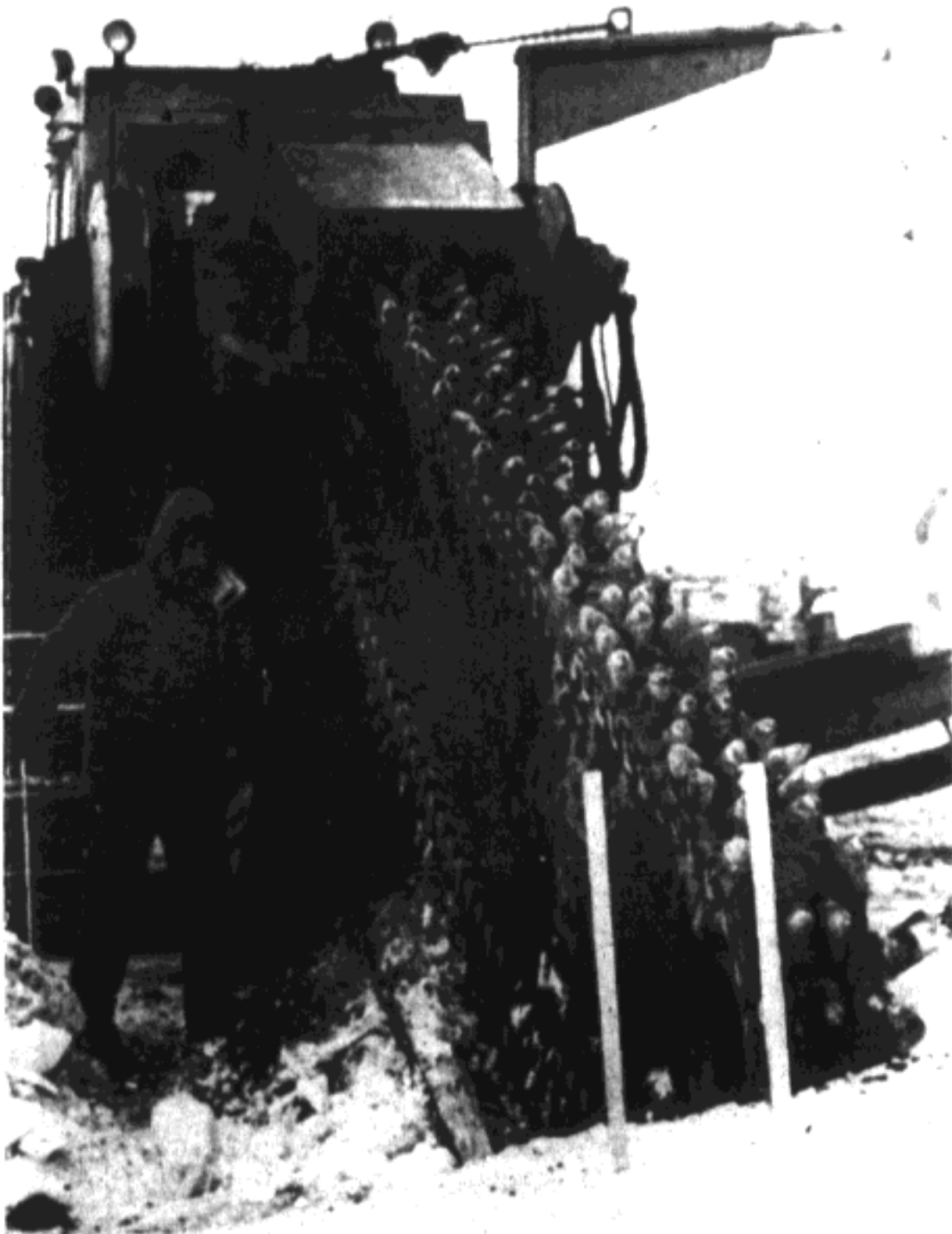
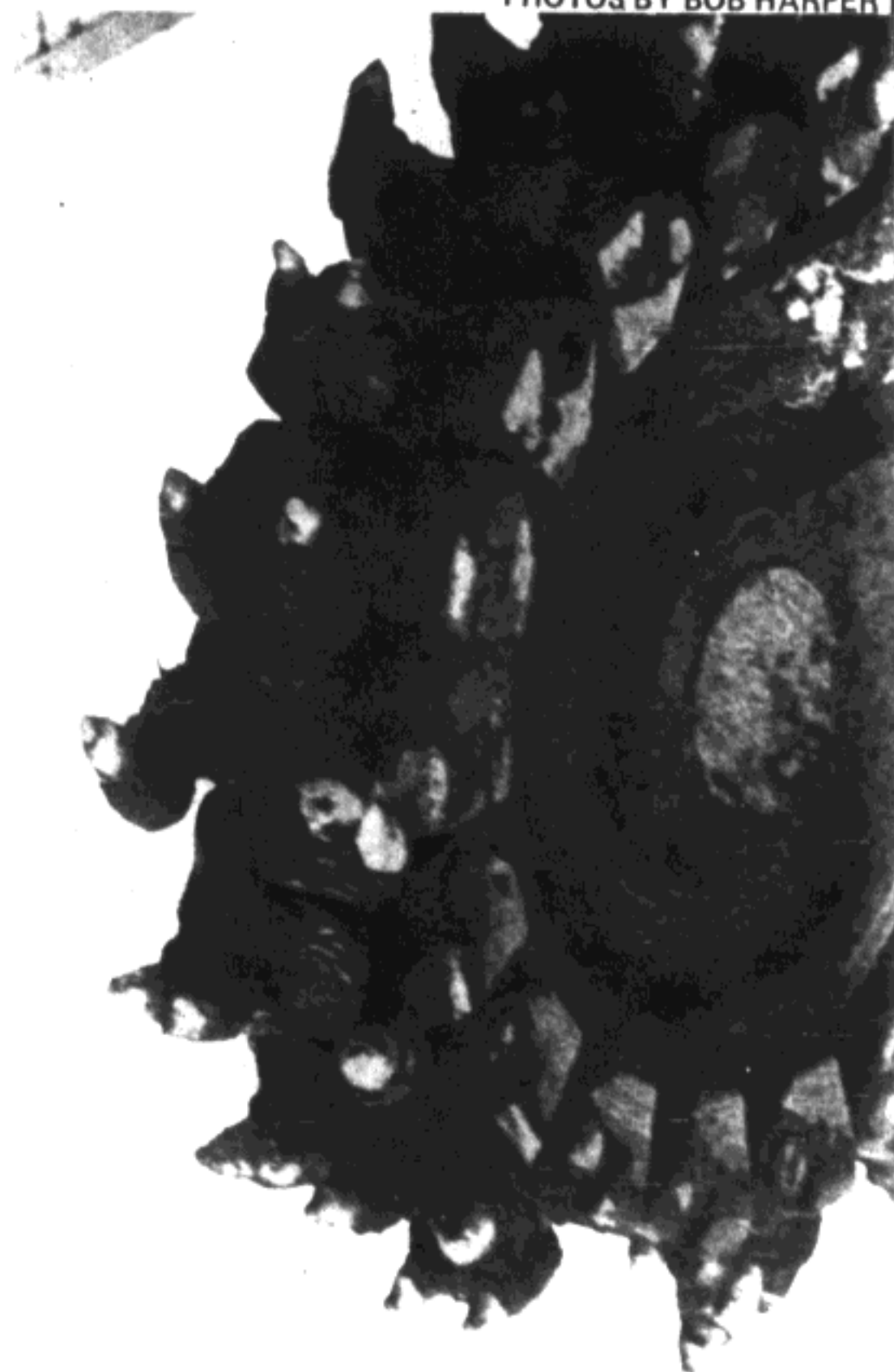
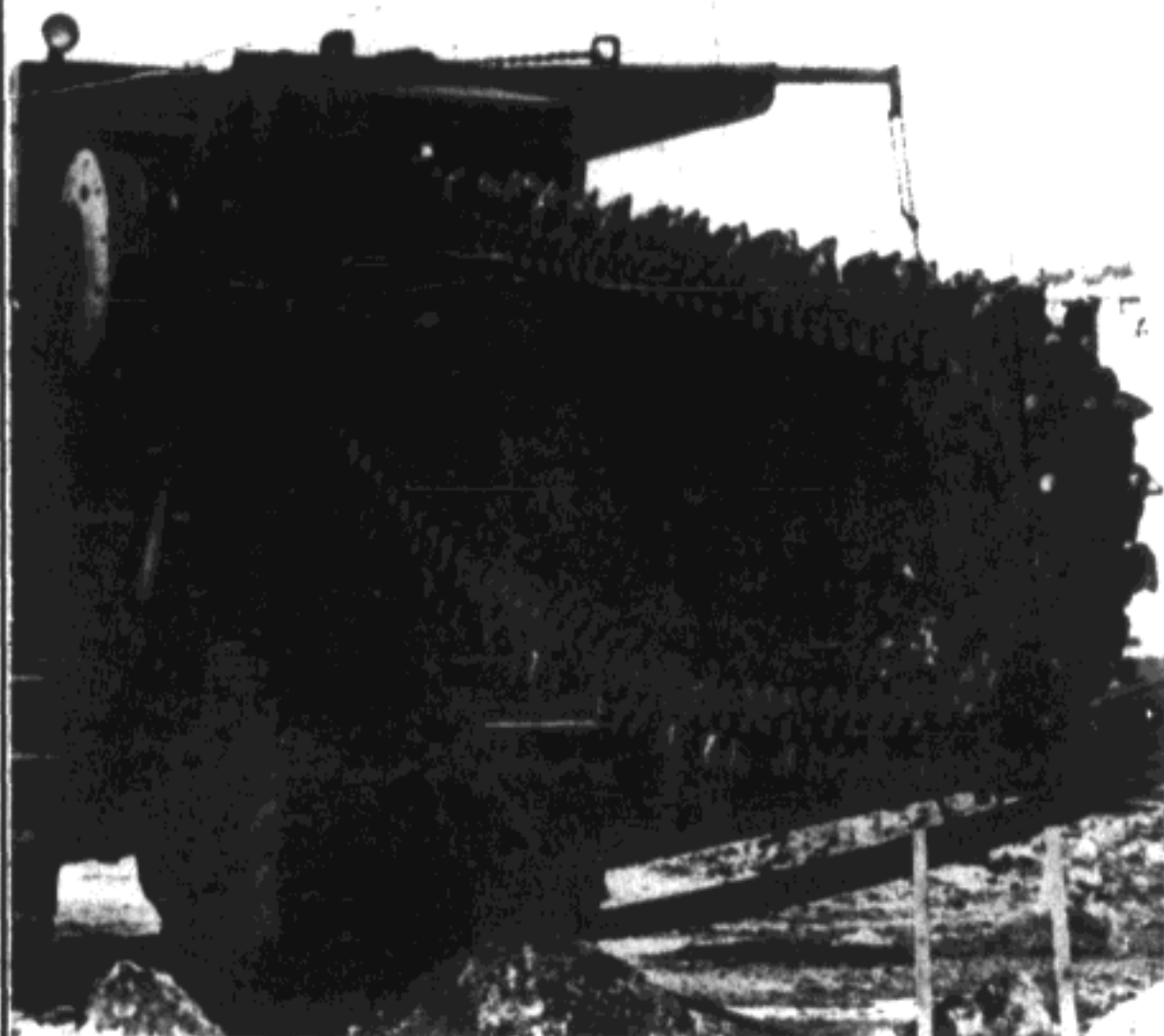
"The rock saw can trim a channel 14 inches wide and up to 17 feet deep at a rate between 500 and 1500 feet a day."

# PHASE

# 1

# CONSTRUCTION

PHOTOS BY BOB HARPER



"Wherever it goes, huge square ditches ten feet deep and ten feet wide are required to bury the utilidor. You don't dig such a ditch. You cut it. To do that the North Slope Borough has enlisted a large rock saw that looks like a chain saw for King Kong stuck on a bulldozer."