

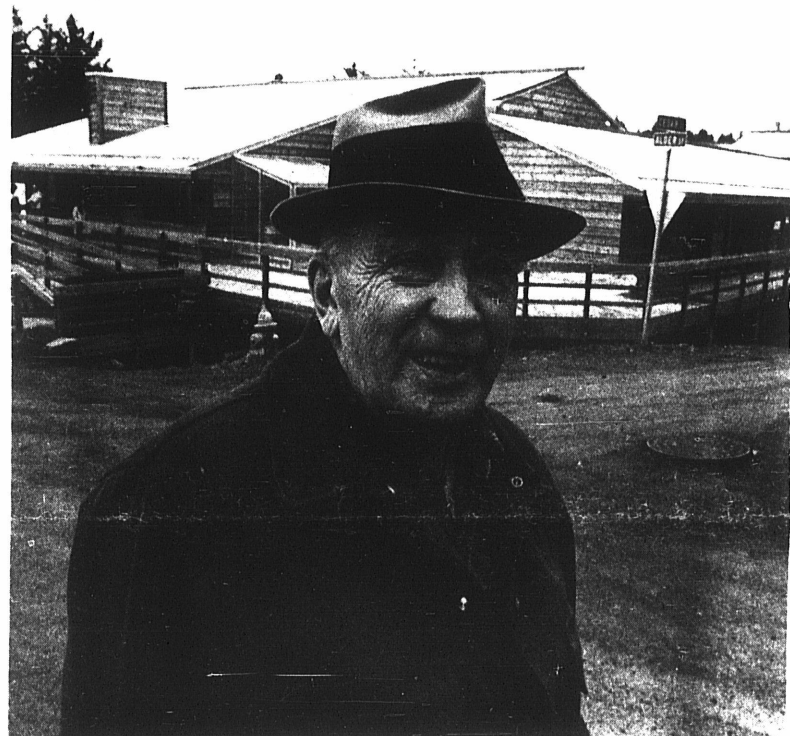
Lakeside Terrace is special place

The two buildings sit side-by-side near downtown Seldovia. One, a tin-covered six-plex has been a landmark in the community for many years, and long the home for several senior village residents. Since July 1, the people swelling in the old building have watched a new structure being built next door.

They watched the construction of "Lakeside Terrace" with more than a passing interest. Each day, they visited the site giving helpful advice to workers and contractors. Last weekend, the 18-unit apartment building was complete, and the residents of the old tin six-plex joined in the celebration held to mark the completion of construction. Then, they began to pack their belongings and move next door.

It is a very special kind of housing project, completed with a head of construction by a very enthusiastic band of workers and contractors. It involved an unusually close cooperation between the Native Village of Seldovia and the contractor, with the help of agency staff from the Fair Housing Administration. The reason there is a "special" way that it was built is because it not only integrated and involved a consultant in all phases of planning and construction, but the elders who are moving in last weekend.

(Continued on page 12)



Carl Linstedt, an elder from Seldovia, is the new building manager for the elderly housing project standing in front of which recently was opened in the village by the Cook Inlet Housing Authority.

PHOTOGRAPHS BY ANDY KLAMSER

Seldovia senior citizen center

(Continued from page 1)

Seldovia Mayor Darlene Crawford, opening the dedication ceremonies, said, "This building today has a lot to do with what the people of this community wanted. Cook Inlet Housing Authority Chairman Maxim Dolchok noted, "It couldn't have been done without the involvement of the elderly people."

The building, with beautiful cedar exterior, has roomy and substantial apartments, indirect hallway lighting, a bright community room with fireplace, and even an adjoining greenhouse. It has one thing in common with the old six-plex, are now managers of Lakeside Terrace.

It is only fitting. As Mayor Crawford explained, "Carl and Daisy have provided this service for years at a low cost and some sacrifice." It was also fitting that Carl Linstedt make the formal acceptance of the project on behalf of the people of Seldovia and the Cook Inlet Housing Authority.

John Duffey, of the Anchorage Area Office of the Department of Housing and Urban Development, told the gathering that "HUD was very glad to be a part of this kind of undertaking."

After the speeches, a generous assortment of food catered by Agnes Lee was served, followed by cake baked by Norma Lindstedt and Katheryn Kashevarof, and tea and coffee served by Elaine Giles and Clara Oaks.

Guests included the contractors, MSW & Associates, the general contractor, and Johnson Construction, the local contractor from Seldovia; and Cook Inlet Housing Authority Commissioners Dolchok, Walter Riley, Allan Chase, and Fred Elvsaa; Cook Inlet Native Association directors and staff, including president Robert Rude and executive director Jake Lestenkof; and Housing Authority executive director Larry Eckels.

Fred Elvsaa, president of Seldovia Native Association, Inc. since the creation of the village corporation, played a central role in the project, according to many present at the dedication.

Fred, like others involved in the project, played a quiet role in the dedication, content to watch the reactions and hear the comments of those most closely involved in the effort. Those are the residents of Lakeside Terrace who began to move in last weekend. For many of the new residents, it is a move of only a few yards - but it is a big move, indeed.

Twenty-three residents moved into Seldovia's new elderly housing project last Saturday (top photo). Contractor Peter Merryman takes a breather from putting the finishing touches on the project. Fred Elvsaa (right photo), President of Seldovia Native Association, talks to Clara Oaks who just moved into the new facility from the old housing project next door (bottom photo).

**Photos
by**

ANDY KLAMSER

