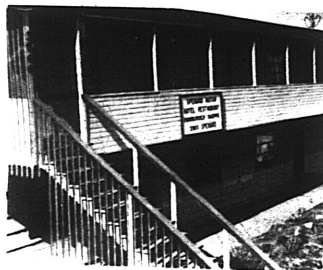


Enjoy Your Stay In Anchorage



Spenard Motor Hotel

Singles \$25/Day Doubles \$35/Day

- Restaurant
 - Kitchen in every room
 - Office set up on request
 - Easy access to town and airport
- Bush Discount 10% OFF!**

**Call for reservations
243-6917**

Name _____

Address _____

Please reserve my space:

Arrival Date: _____ Departure Date: _____

Singles _____ Doubles _____

Mail To:

**Spenard Motor Hotel
3960 Spenard Rd.
Anchorage, AK 99503**

NOTICE OF GRANT APPLICATION

The Board of Directors of the Northern Alaska Health Resources Association invites public review and comments on its application for renewal of full designation as required by federal law. The application contains the proposed 3-year work program for the agency. Public involvement in the development of the work program is encouraged and necessary.

Comments on the draft application will be accepted and considered if received by May 25, 1981.

Copies of the application are available for review at the Public Library at Barrow, Kotzebue and Fairbanks or can be obtained by calling or writing the NAHRA office at 529 5th Ave., Suite 8, Fairbanks, AK 99701; phone 456-2553.

Orca WORKBOATS

The bottom line is that an Orca workboat will make you money. Orcas cost less to buy, less to ship, less to operate and less to maintain.

LOWER INITIAL COST. Using modern manufacturing techniques, Orca builds a solid, no frills workboat. Your purchase dollar buys more rugged workboat and less gingerbread accessories. You add only the optional equipment you need and put the savings in your pocket.

LOWER SHIPPING COST. Orca workboats are designed to be neatly stacked to save shipping costs. Pilot houses are available in kit form to keep shipping costs even lower.

LOWER MAINTENANCE COSTS. Thick, hand laid fiberglass, iron bark rub rails and other commercial grade construction features make an Orca nearly indestructible. Simplicity

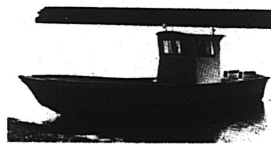
of design eliminates high maintenance items. Your Orca will give you years of service and ask for minimum attention.

LOWER OPERATING COSTS. Orcas have a unique modified trihedral hull that is designed to carry tremendous loads at high speed with small, fuel efficient engines. The shallow vee bow and flared gunnels give you a softer, dryer ride and allow level beaching for easy loading. The wide, flat bottom planer easily on top of the water even when fully loaded. The shallow draft is perfect for river and beach work.

THE ORCA BOW-PICKER. High interest rates don't have to keep you from having a new fishing boat. The Orca Bowpicker is the fastest, comfortable fishing machine you can afford. It's fast. Twin, gas stingy, Volvo four cylinder I/Os push the 30 x 10 hull nearly 24 knots. V-8 and diesel I/Os are also available. Big work deck. Over 155 cubic feet of fish

out of the way under the self bailing deck. The bow roller is mounted on the punt bow for no-anag net handling.

Designed for the rugged Alaskan salmon fishery, you can use your Orca to fish for halibut, run a string of crab or shrimp pots, gillnet herring or as a hunting boat. The Bowpicker is a year round profit maker.



Alaska

MARINE & EQUIPMENT, INC.

1200 West International Airport Road • Anchorage, Alaska 99502 • (907)276-1540