

# PEAR TREE

Keep Christmas Merry

However, there's no room for a partridge in this Pear Tree. By next Christmas it will be filled with money you've saved in your new and special NBA Christmas Savings Account. Think of it as a pear tree that is nurtured along—little by little—until it blossoms into a full grown tree.

You set your goal, and each month deposit a set amount into your special "Pear Tree" account, either in person, by mail, or we can automatically transfer it from your checking account. Each quarter we'll advise you of the growth of your Tree.

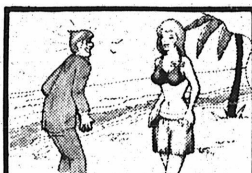
You'll earn the full 5% annual rate on your account. And that's like sunshine. It makes your Pear Tree grow a little more.

After all, we're here on your account.



NATIONAL  
**Bank of  
Alaska**

Member Federal Deposit Insurance Corporation and Federal Reserve System



When it's been a long, tough weekend on the island and suddenly there's Friday —

Spend the weekend at the Captain Cook.

For information on our special weekender package, see your travel agent or write:  
Hotel Captain Cook Weekender  
P.O. Box 2280  
Anchorage, Alaska 99510

*the hotel*  
**Captain Cook**