

## ***Apartment/Hotel Complex—***

# **Bethel Boasts Modern Facility**

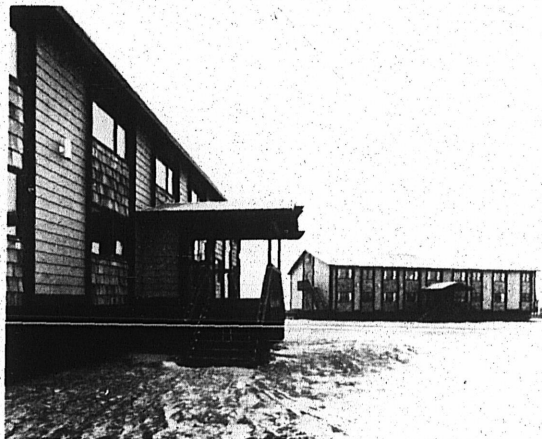
The Kuskokwim village of Bethel, Alaska can now boast of Apartment housing equal to any in remote Alaska. Owned by the Bethel Native Corporation, the new hotel and apartment complex has 40 completely furnished units and consists of two separate buildings.

According to Ralph Stefano, and Associates Consulting Engineers, of Anchorage, the project is "one of the best constructed buildings in any Alaskan Bush Community."

Stefano stated that the "material is of good quality, the construction is sound, everything fits, and there's excellent attention to detail."

Contractor for the project was Tom Gittins, of Gittins Construction based in Anchorage. Working with the project superintendent Tom Langlie, Gittins finished the project nearly two months ahead of the original completion date of Jan. 5, 1975.

The project was conceived in March of this year during discussions between the Bethel Native Corporation and Paul Kreuzenstein, an Anchorage consultant. The contract was signed



**BETHEL APARTMENT COMPLEX** — The Bethel Native Corporation has just completed a 40-unit apartment buildings and each unit has a kitchen with one and two bedrooms. Local people are saying that Bethel has the "nicest new apartment/hotel complex in rural Alaska."

June 15th and by July 17, Gittins had the foundation pilings in place.

Each of the pilings had to be coiled in copper and attached

to refrigeration units to keep the permafrost solid.

On the 7th of August, the framing began with a crew con-

(Continued on page 7)

# Bethel Boasts Modern Facility . . .

(Continued from Page 1)

sisting totally of Bethel area Natives. According to Langlie, the crew consisted of men whose only experience was boat building; but Langlie stated that their enthusiasm and responsiveness contributed to the early completion of the project.

Eddie Hoffman, the personal president of the Bethel Native Corporation and Mayor of Bethel, takes obvious pride in talking about the project. According to Hoffman, "everybody's been hollering about housing for some time now so we did something. Now they've got some good housing."

Not only does Bethel have improved housing, but they also have some of the best hotel accommodations in remote Alaska, since one of the two buildings will be used initially for that purpose.

The hotel building consists of 23 rooms, each one having a complete kitchen. The units will rent for a reasonable \$20/night.

The second building will be strictly apartments containing 17 one and 5 two bedroom units. Dan Johnson, Manager of the complex indicated that only five were left unrented by the time

the project was finished.

Johnson, a former principal from Adak and AVCP student housing director said the intent of the BNC project was to attract higher income people now living in Alaska State Housing Bethel Heights project by doing so make room in the ASHA project for more lower income people.

Both Hoffman and Kreuzenstein had expressed the same feelings earlier. Whether or not the strategy works completely is yet undetermined. But in any case the joint enterprise between the Bethel Native Corporation and Gittins Construction has left Bethel with the nicest new apartment/hotel complex in rural Alaska.



**ATTRACTIVE UNIT** — New Bethel apartment/hotel will soon be offering these attractive units and at an attractive price. The new facility belongs to the Bethel Native Corporation.