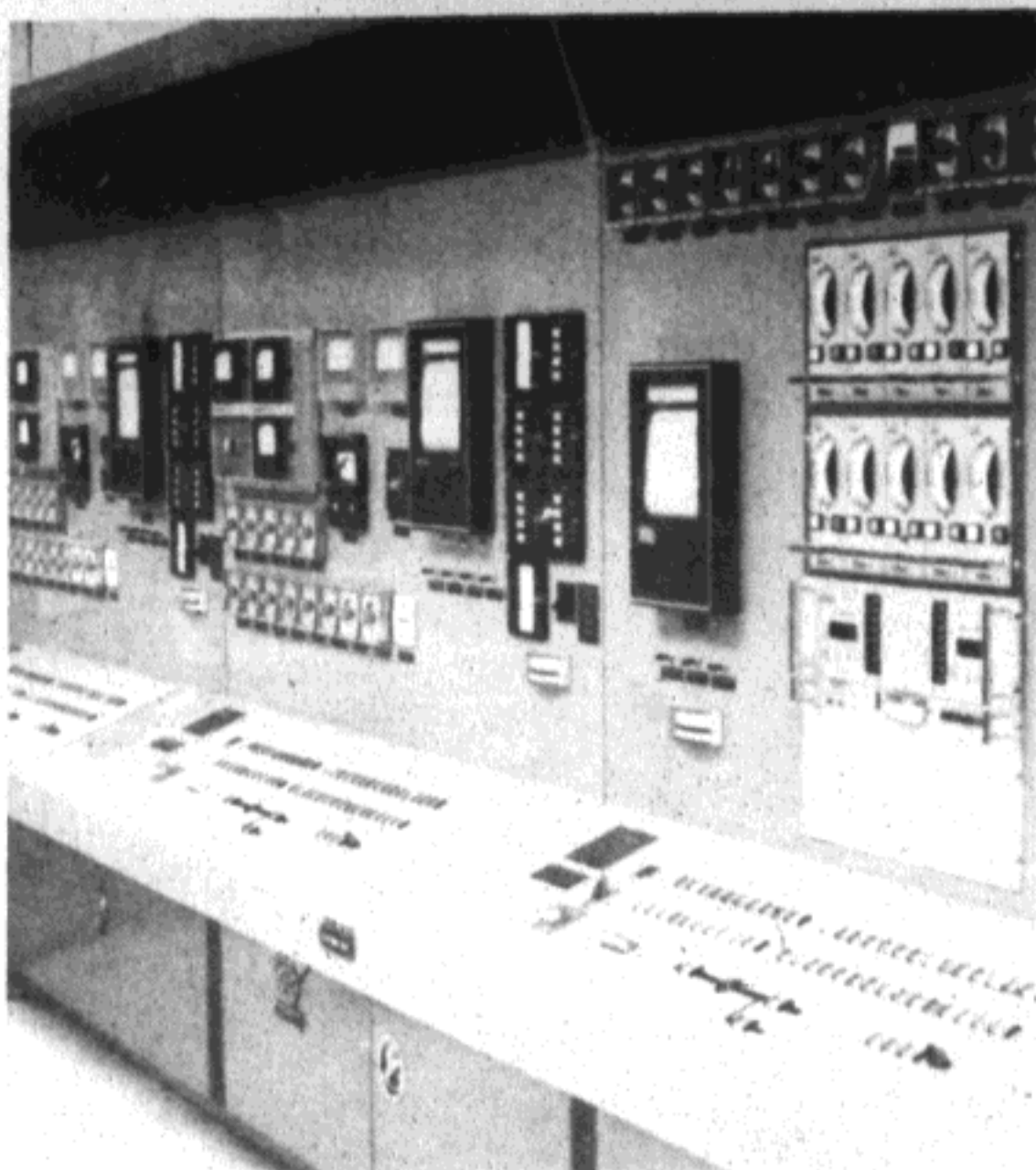
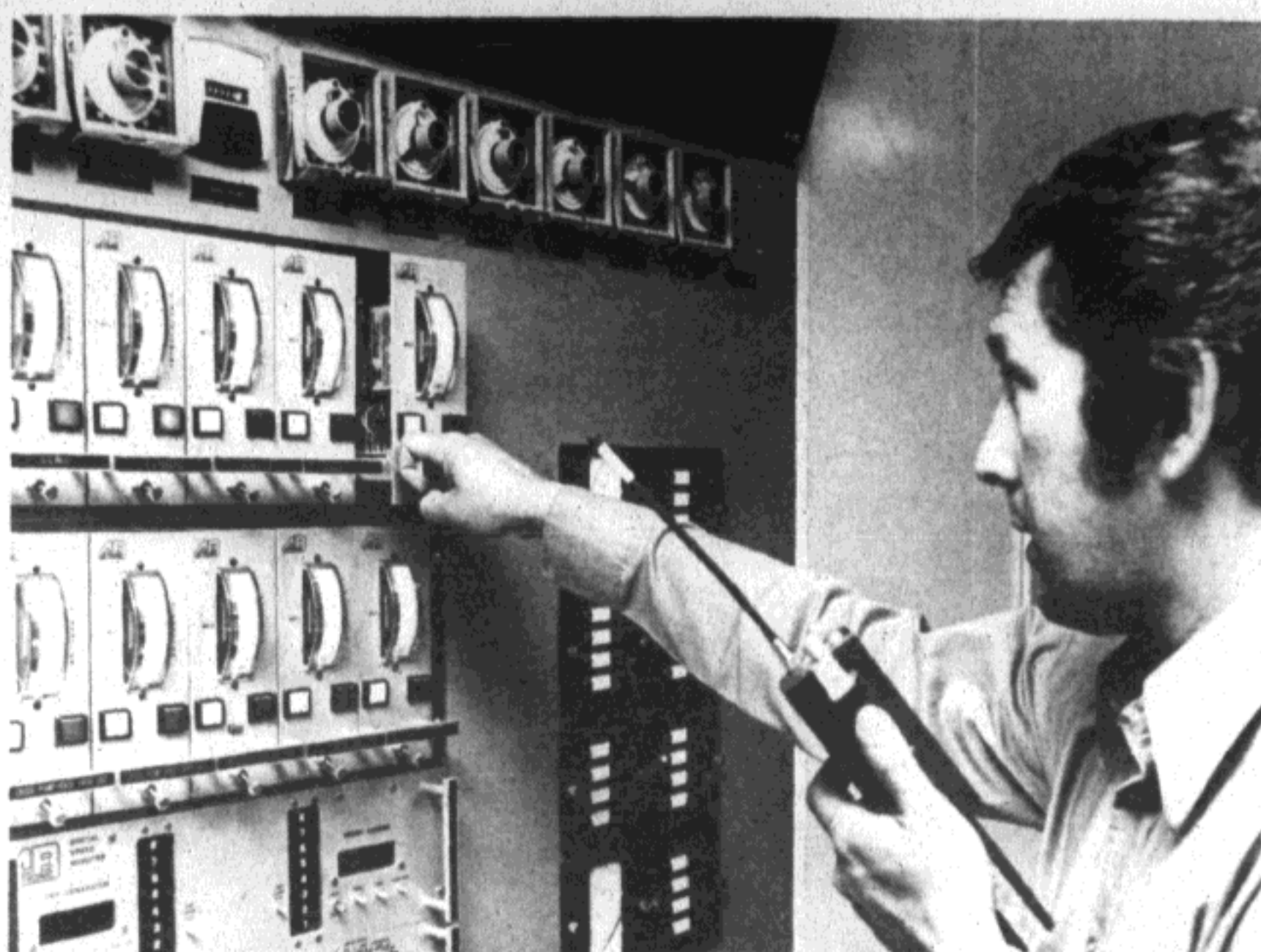


ALASKAN OIL BEGINS TO FLOW

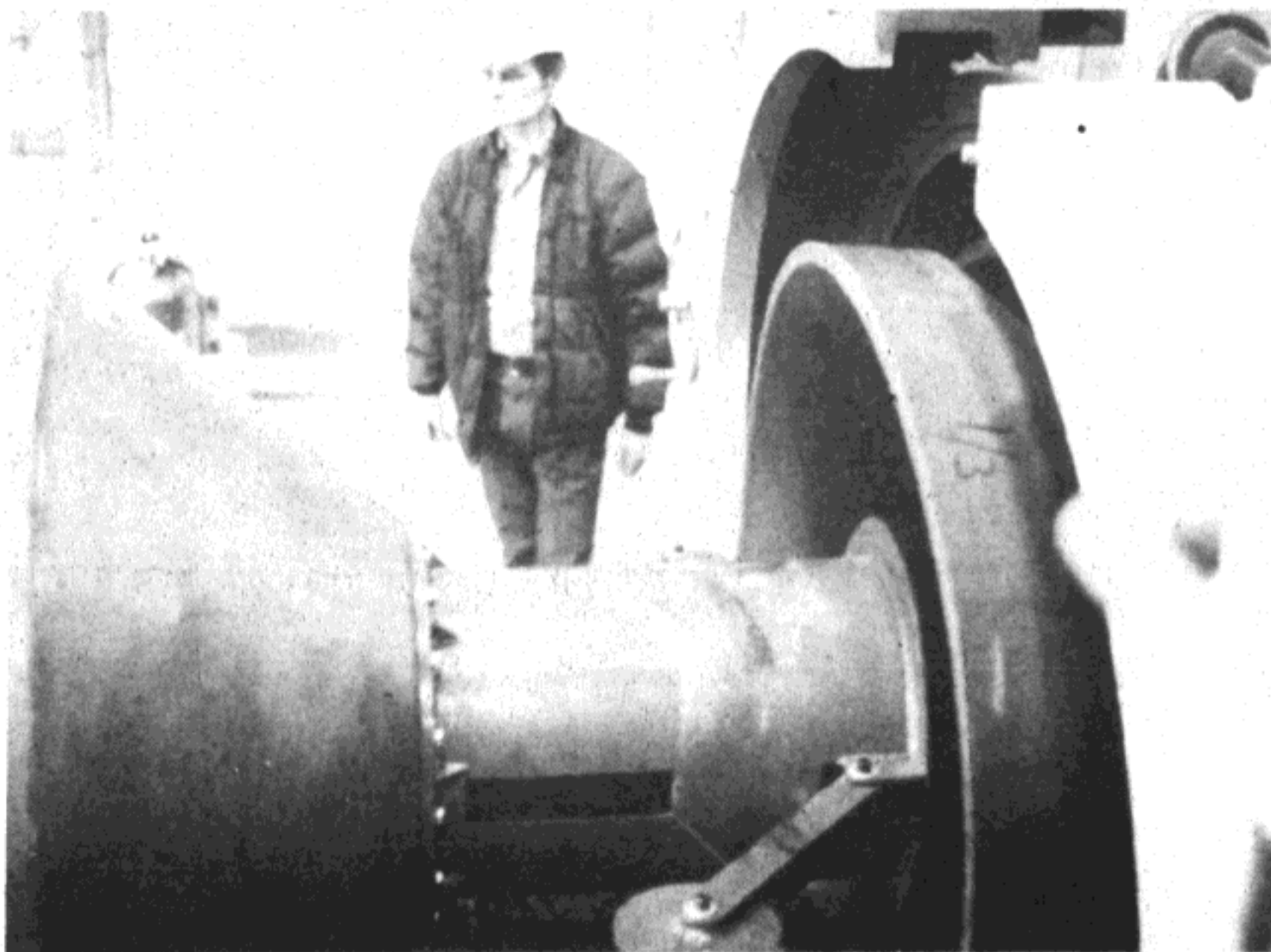


THE MAIN CONTROL ROOM—at pump station 1. It was from this room that the pipelines oil is constantly metered and the flow is controlled.



ALYESKA PUMP STATION TECHNICIAN—Sam Demientieff of Fairbanks checks the readings on turbine unit control panel. These panels give important information on conditions of oil in the pipeline.

—Photo courtesy of Alyeska



Here a scraper building technician has started the "pig" into the end of the pipe at pump station number one.



Security guard boards the press bus at the gate at pump station one. His shot-gun can be seen on his back.



Atlantic Richfield's central compression plant and field fuel gas unit supplies the field with gas for fuel.



ALYESKA TECHNICIAN— with his finger on bottom that controls the valve that started oil into the pipeline. There is another in Valdez that was to be used but after some problem occurred, this button actually started up the pipeline.

Photographs by William Ares