

ESKIMO TRADITION OF WHALING IN ALASKA



FEAST PREPARATION—Point Hope women and youths are busy cooking varieties of meat for the traditional feast at the end of the successful whaling season. The cooking

of the meat is done on the ancient whaling grounds of the Qaamaqtung. The event takes place in the early days of June.

—Photo by ANDREW TOOYAK



LAST SPASMS—Assured that the whale is beyond escape, the whaling crew in the background waits for the momentary end of the whale, shown in its last spasms.

—Photo by DON FOOTE



WHALERS AT CONFERENCE—A whale had just been caught and the whalers are at conference to decide to whom the choice shares of those crews who helped will be awarded. Whaling at Point Hope occurs between April 15 and the end of May.

—Photo by REV. KEITH LAWTON



STRIPPING BALINE—The huge whale caught by Allen Rock in 1961 weighing about 60 tons is being worked on. The men are stripping the baline from the head of the whale longest of which was 11 feet 6

inches. The jawbones measured 19 feet. Rock and his crew caught the huge mammal working from their 24-foot skinboat or umiak.

Photo by DON FOOTE

Minto Folks Vote for Move

The village of Minto has voted 100 per cent to move the present village to higher ground.

Minto, through the years past, has suffered almost yearly flooding of the village due to its low location.

"The people of Minto gave the Bureau of Indian Affairs permission to contact all government and state agencies that would be involved in the move," said Richard Frank, former Chief of Minto.

Frank said that Minto will have a dozen people available to meet with state and federal

agency officials on May 16-17.

Richard Frank said that Minto people have three or four locations in mind to move to.

He said that Rock Island area seemed to meet with approval among the people he said the ground was high enough and would not be in danger of flooding.

Whatever location is picked, it will have a river access. Health and sanitation aspects will be considered where these were difficult at the present site because it is

swampy.

"Location of the airfield will be considered also," Frank said. "On the Rock Island area, the location would be close to the Livergood highway and this will be considered."

Rock Island is about 20 or 24 miles from the present site. Richard Frank said BIA will be instrumental in the plans of moving as well as other agencies involved.

He said the initial move would probably take place in the spring or summer of 1969.

Legal Services Board to Meet

The statewide board of directors of the Alaska Legal Services Corp. will be meeting April 19-20 at Bethel.

The directors will be coming from as far away as Point Hope at the far Northwestern Alaska and from as far south as Ketchikan.

William Jacobs, Executive Director, will report on statewide progress in providing lawyers to serve the legal needs of Alaska's poor people.

The major item for decision by the board will be a proposal by Jacobs to change the method of selecting members of the board.

Land Bill

(Continued from Page 1)

people of Alaska. The federal bill also proposes that the native people would receive from the shelf revenues no less than \$65 million.

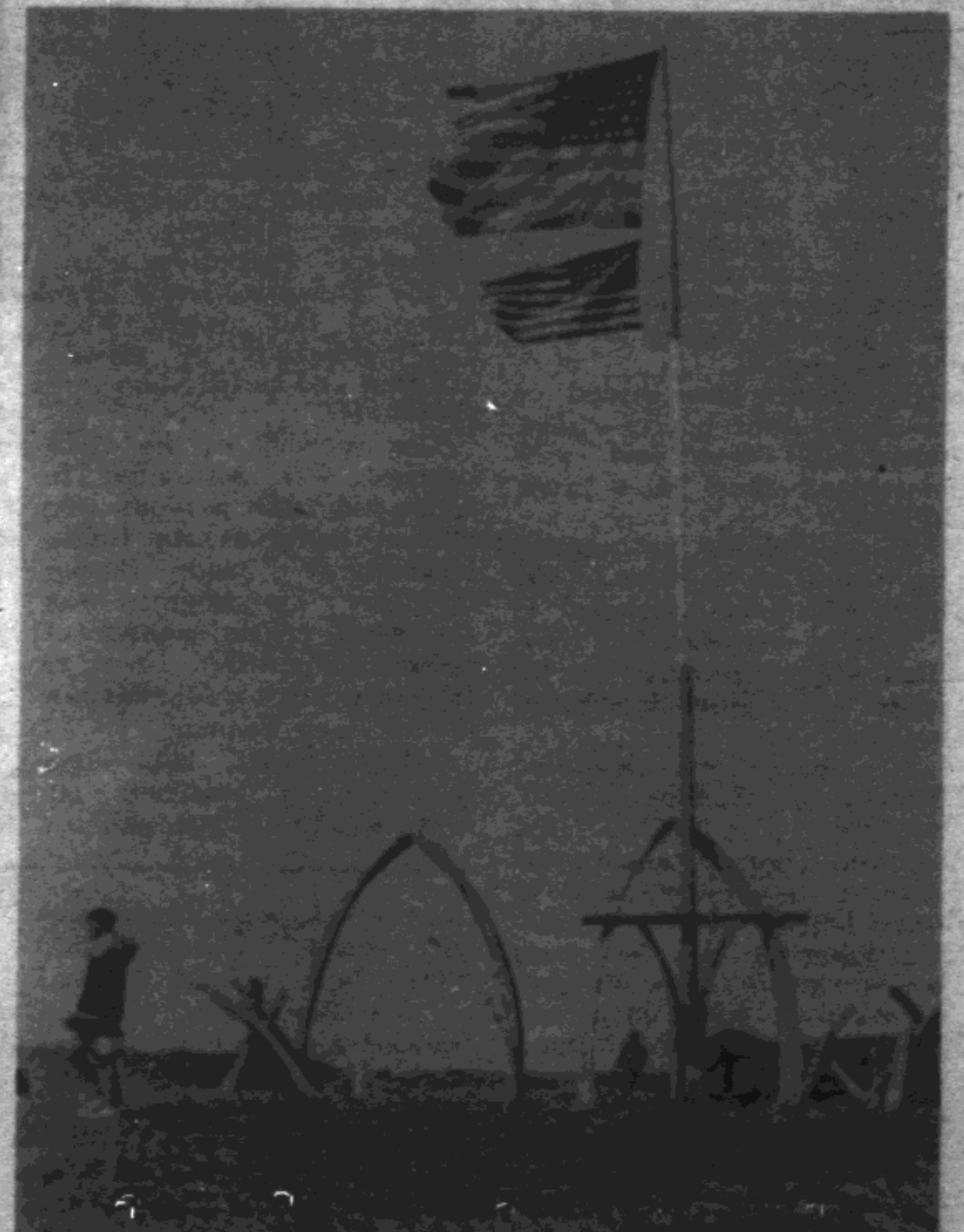
Conferences...

(Continued from Page 2)

Bert Pappan from the Washington office, and Mr. Bart Bovay of OCS in Albuquerque.

Present at the conference were District Superintendents, and administrative and accounting personnel from the Juneau Area and Seattle offices.

A second conference, to plan the big spring student airlift home from school, began last Tuesday. It involves the six major airline



CELEBRATING GROUNDS—These are ancient grounds on which whaling celebrations are held at Point Hope. The flags denote a successful whaling season. The arches are whale jawbones. Three days of feasting, dancing and observance of the occasion are held on these grounds.

—Photo by ANDREW TOOYAK

companies in Alaska, the BIA's Division of Education, and some 2000 Alaska Native youngsters.

Late in May, students will begin flooding home for the summer from Mt. Edgecumbe High School and Wrangell Institute, and from Bureau of

Indian Affairs schools in Oregon, New Mexico, Oklahoma, and Kansas.

The airlines involved in the airline operations are: Reeve, Western, Northwest, Alaska (and Alaska Coastal), Pan American, and Wein-Northern Consolidated.