

Archdeacon W. Hannum Attends Two-week Orientation Session

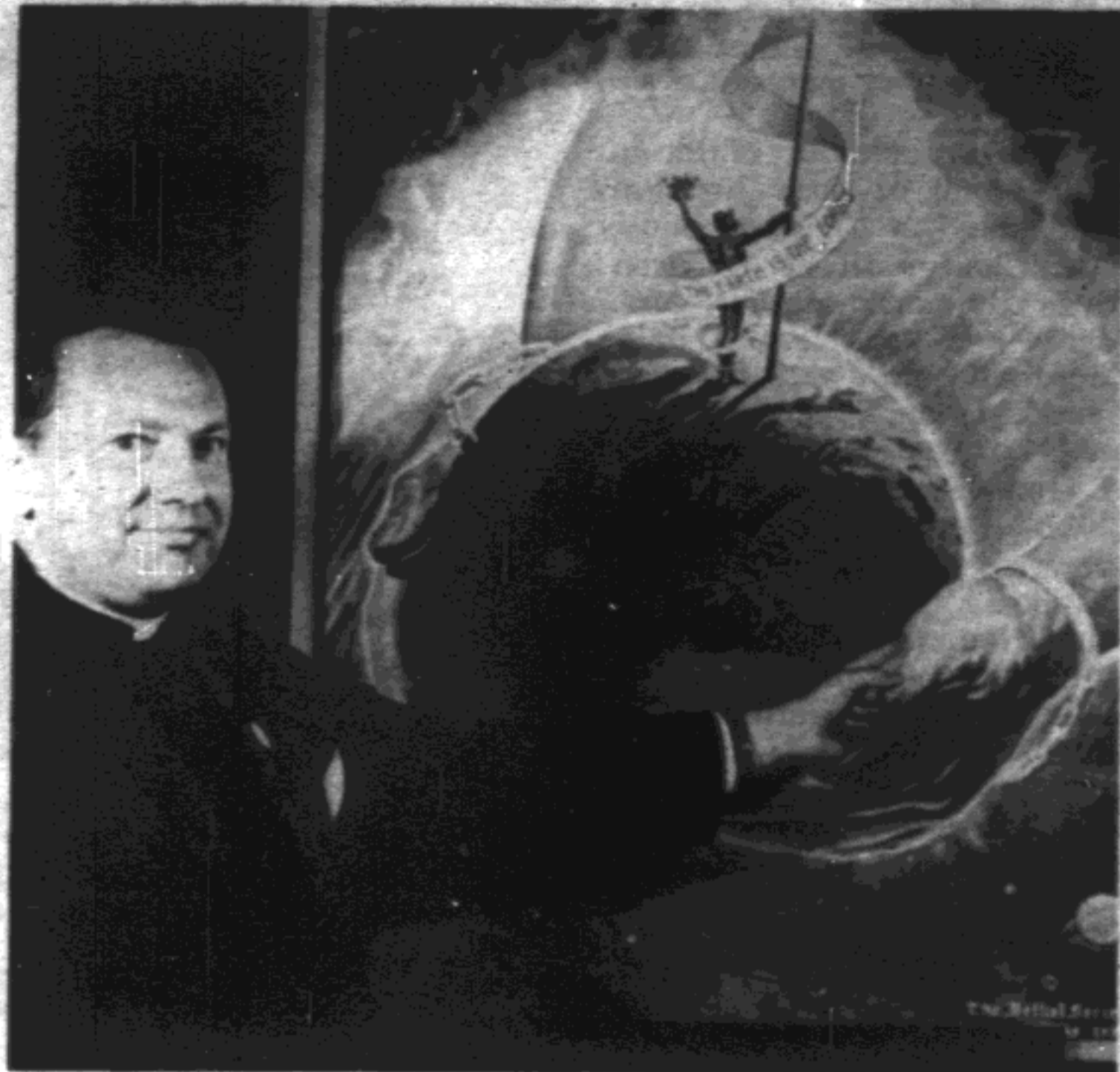
MADISON, WIS.—The Ven. Walter W. Hannum, Archdeacon of the Arctic of the Episcopal Church, is attending an intensive two-week orientation session conducted by the Adult Christian Education Foundation, Madison, Wis. The session will conclude today.

Following the national clinic, the Arctic Coast Training Center will launch locally the use of the Bethel Series, a long-range adult Bible study program now being used by more than 1500 Christian churches throughout the United States and Canada.

Archdeacon Hannum will begin this fall to enlist a corps of prospective lay teachers, committed to a two-year teacher training program, in preparation for the congregational use of the Bethel Series two years hence.

By the fall of 1968 approximately 1,500 new teacher trainees will join an estimated 20,000 teachers in taking a disciplined study of Scriptures to classes of adults in their respective congregations.

The interdenominational program was first offered nationwide by the Adult Christian Education Foundation, a non-profit organization, in 1961. It now reaches into several foreign countries



SYMBOLIC PAINTING—Archdeacon Walter W. Hannum of the Arctic of the Episcopal Church at Pt. Hope, is posing before a symbolic painting, one of the 40 paintings done by Walter Ohlson (cq), a retired Christian artist. Archdeacon Hannum attended the Adult Christian Education Foundation in Madison, Wis. that ended today.

and is translated into several languages.

Using a series of 40 dramatic paintings and rigid teacher disciplines, the Bethel Series aims to acquaint adults with the great, unifying themes of the Bible.

The paintings serve as symbolic memory aids of the concepts but the core of the program is in providing the

pastor or Christian education director tools with which to adequately train lay teachers.

The clinic is one of three identical sessions offered each summer by the Foundation.