

Mercedes Benz Volkswagen
Datsun Jeep Saab

A & B AUTO SALES, INC.

"Import Auto Center"

Sales and Service

**618 Airport Rd.
 Fairbanks, Alaska**

**Phone
 456-6161**

BIG RAY'S SURPLUS

Send for Our Free Catalog

Top Value at Low Prices

452-3458

507 2nd Avenue

- STEEL
- PLATES
- ANGLES
- CHANNELS
- SHEETS

IN STOCK
 FOR IMMEDIATE
 DELIVERY
 TANKS
 Septic — Oil — Water

GREER
Tank & Welding
 Ph. 456-5835
 125 Adak—Hamilton Acres
 Fairbanks, Alaska

Kohler Light Plants
 Tillie Heaters and Lamps
 Electric Motors—All Types

Complete Service For
Generators
Electric Motors
Power Tools and
Welders

Write today for further
 information

AERO
SERVICES CO.

Box 2191 — Phillips Field
 479-6666
 Fairbanks, Alaska

FAIRBANKS

INSURANCE

AGENCY

**DON'T TAKE
 CHANCES!**

Check Your
 Fire Insurance
 Coverage NOW

Make Sure It Is in Line
 with Today's Value
 of Your Property

Call Wally Cathcart
 Today at 456-6644

Fairbanks Insurance Agency
 55i 3rd Avenue, Fairbanks



EGGS
 BUTTER
 CHEESE
 POULTRY
 HAMS
 PRODUCE
 "MEATS"

**KEEP YOUR CACHE
 or FREEZER FULL
 of
 Quality Meats**

Fresh or frozen front and hind quarters cut and wrapped
 to your specifications and sent out to you promptly. All
 Quality Meats are expertly cut and trimmed.

Order by Phone or Mail: 452-2371 or 452-2391

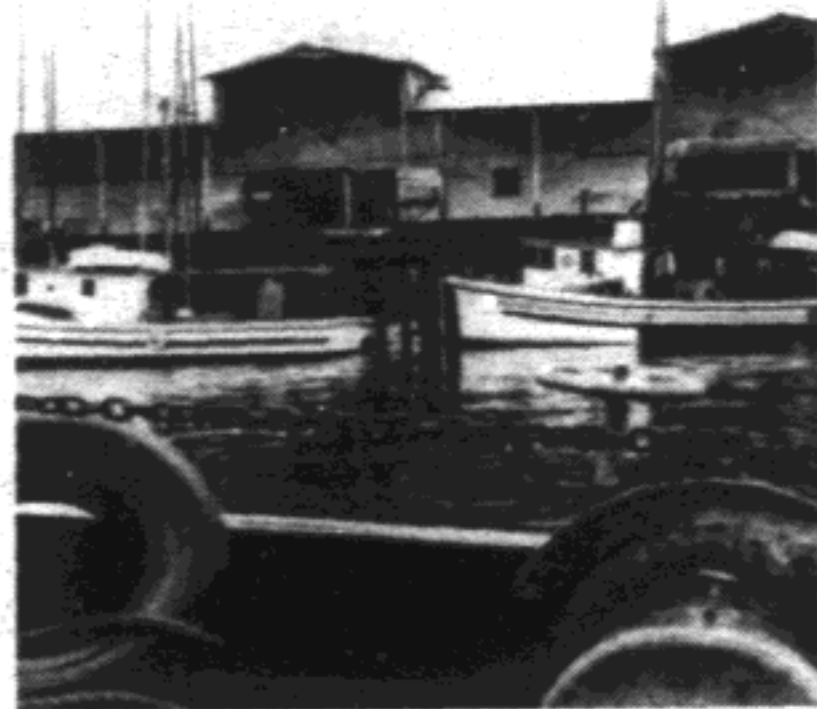
QUALITY MEAT CO.

Wholesale Meats

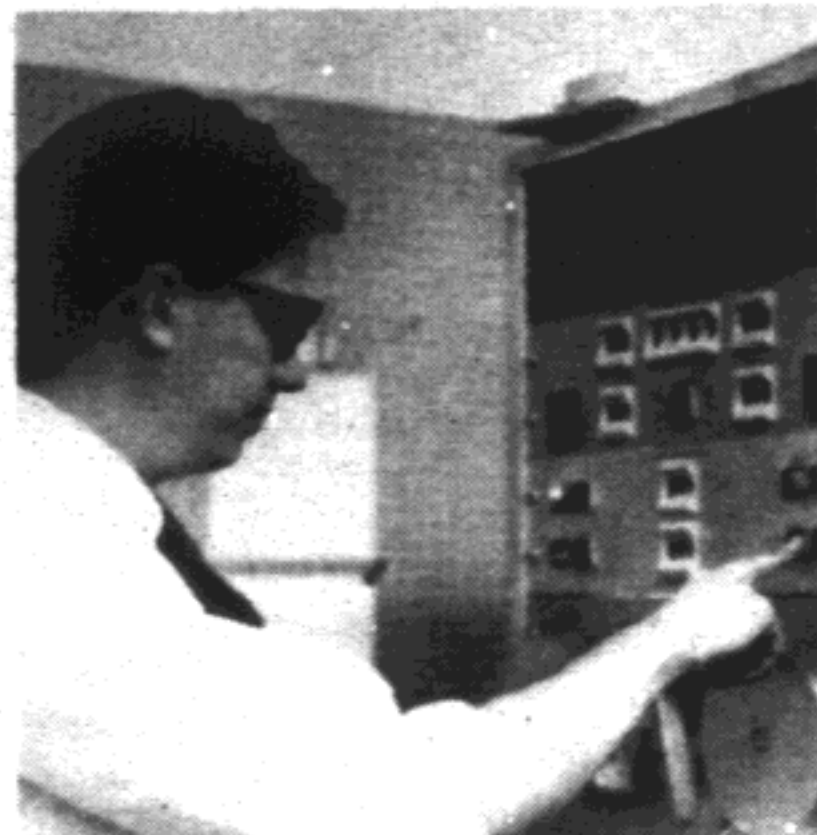
P.O. Box 1067, Fairbanks
 (1001 Pioneer Road)

AN INVESTMENT IN THE FUTURE

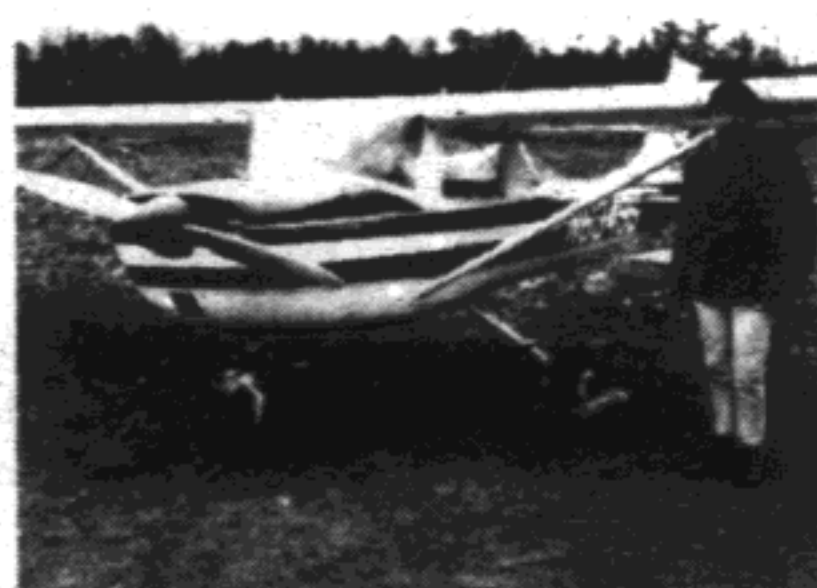
**YOUR EDUCATION AT
 SHELDON JACKSON COLLEGE**



FISHERIES, FORESTRY AND LOGGING MANAGEMENT courses are designed for the person who wants more than work just in the field, but wants administrative responsibility, too. Close to logging operations, pulp mill and a multi-million dollar fishing industry, Sheldon Jackson College provides the ideal place to study some of today's vital businesses in the Alaskan economy. Course of study in logging includes Forestry Measurement, Resources of Alaska, Logging Methods, Introduction to business, Introduction to Management Approach, and related forestry electives as well as a background in business, science and the arts. Forestry and Fisheries curricula are similar, but oriented to those fields.



Just as computers are the key to Alaska's future, so the DATA PROCESSING courses at Sheldon Jackson College may be the key to your future. Students learn the computer's language—how to set up and solve problems in business, finance, research, science and industry. Sheldon Jackson's newly leased IBM model 1130 computer is on campus for first hand instruction using the latest teaching techniques. Rounding out the Date Processing curriculum is a university-parallel selection of courses from the arts and science. Already more than 40 computers are spread throughout Alaska, with many more expected—now is the time to begin your education in this fast-growing field.



It's not surprising that FLIGHT TRAINING is proving to be one of Sheldon Jackson College's most successful courses, since Alaskans fly more than anyone else. The student receives flight instruction in the school's Cessna 150. This training plus the thorough ground school prepares the student for the flight and written examinations for private or commercial pilot's license. The Sitka area is an ideal location, with a 5,000 foot paved and lighted runway, FAA Flight Service Station, designated amphibian and floatplane landing area and active airline and charter services.

Social and spiritual growth of students is developed through their participation in musical, dramatic, religious, social, athletic and political activities. Sheldon Jackson College is fully accredited and course credits are transferable. The 352 acre campus with 16 buildings plus staff housing overlooks the ocean and is surrounded by the mountains and forests of Baranoff Island. Downtown Sitka is within walking distance.

Openings are still available for the Fall Semester.
 Don't delay, take the first step today by filling
 in this blank and mailing.

Sheldon Jackson College
 Box 479, Sitka, Alaska 99835

Please send your FREE Fall Catalogue of courses.

Name _____
 Address _____
 City _____ State _____