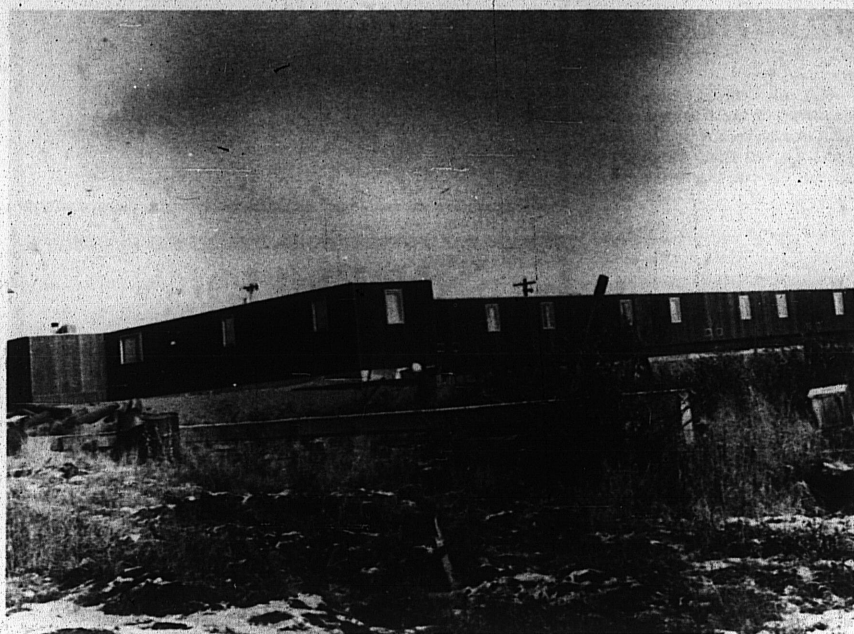


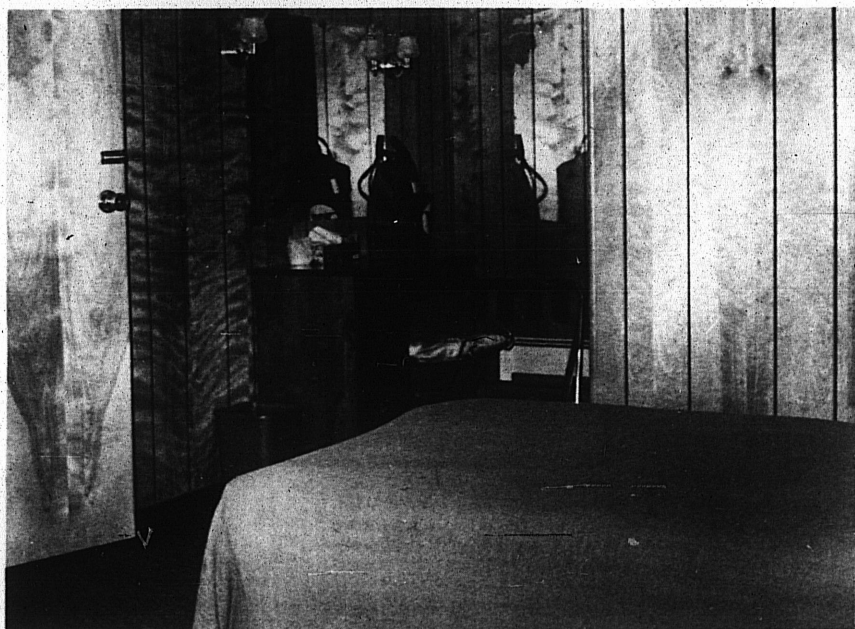
KOTZEBUE AND BETHEL GET NEW HOTELS

Bethel Kuskokwim Inn, 30 Units, Kotzebue Drift Inn, 25 Units



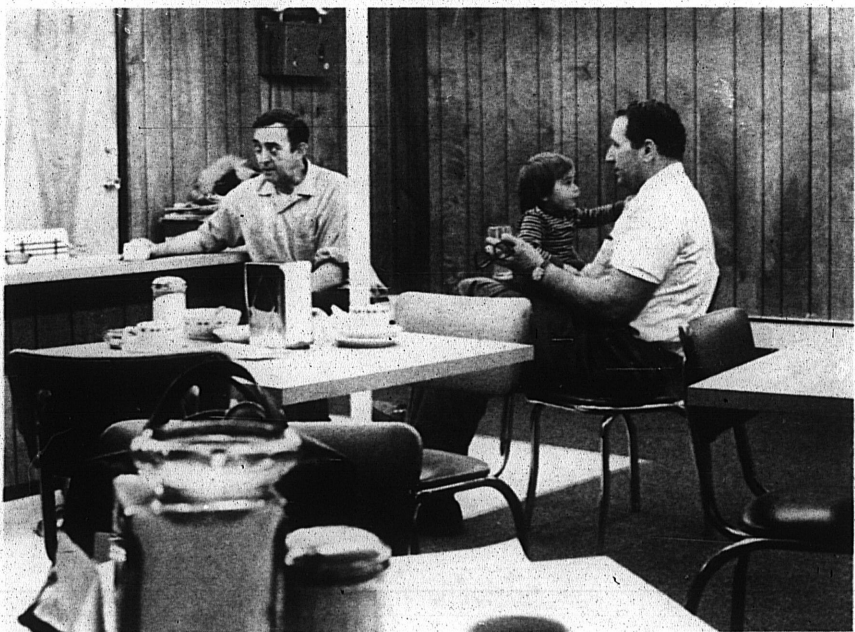
NEW HOTEL—Built of modular units, the Kuskokwim Inn at Bethel, Alaska has 30 nice rooms with wall-to-wall carpeting, baseboard heating,

and an adjacent cocktail lounge. It opened in August, 1970.



KUSKOKWIM INN, Bethel, Alaska, rooms are panelled and carpeted. At the right is a bathroom

with shower, lavatory with hot and cold running water and chemical toilet.



COFFEE SHOP has tables and counter at Kuskokwim Inn, Bethel, Alaska.

Overnight travelers on Wien Consolidated Airlines to Bethel and Kotzebue welcome fine new hotel facilities now available in those two towns.

Bethel boasts of its one-floor, 30-room motel type Kuskokwim Inn and Kotzebue is proud of its three-story, 25-unit Drift Inn Hotel.

Bethel, the business center for the Lower Kuskokwim and Yukon River area, has long needed a new hotel facility. The two ancient roadhouses of dog-team days were no longer adequate for the traveling public in the little town that has doubled its population during the past ten years.

With local leadership a company was formed, backed by local money and that of a number of firms doing business there. This year the Kuskokwim Inn became a reality.

In the tradition of old Alaska, the inside was more important than the outside. Externally it appears like huge boxes joined together—which it is—composed of a series of modular units with 30 rooms, coffee shop and dining room. All is nicely wood-paneled, wall-to-wall carpeting and has baseboard heat.

Each room has hot and cold running water, a shower, lavatory

and is attractively furnished with good beds, drapes, pretty electric lamps and a desk with a mirror.

Due to lack of sewers, flush toilets are an impossibility but each room has its own chemical toilet.

Food is good and comparatively reasonable. Rates are \$20 a day single; \$15 each double. The Inn has been well-filled, since its opening in the early fall.

Kotzebue's Drift Inn Hotel, conveniently located near the airport, is built by W.A.G. Constructors of Anchorage. Bob Hunter, Sr. is president. Bob Jr. is the hotel manager.

The company has had a number of construction jobs in the area and saw the need of additional year-around hotel rooms.

The building is three-story frame with 15 rooms available now and 10 more to be ready shortly. Rooms are large, by bush standards, have wall-to-wall carpeting, attractive furnishings and each with a modern bathroom.

The building has its own water and sewer systems. There's a dining room with a sea view and a beer and wine bar. Rates are \$26 a day single and \$38 double.