

# CONGRATULATIONS GITTENS CONSTRUCTION

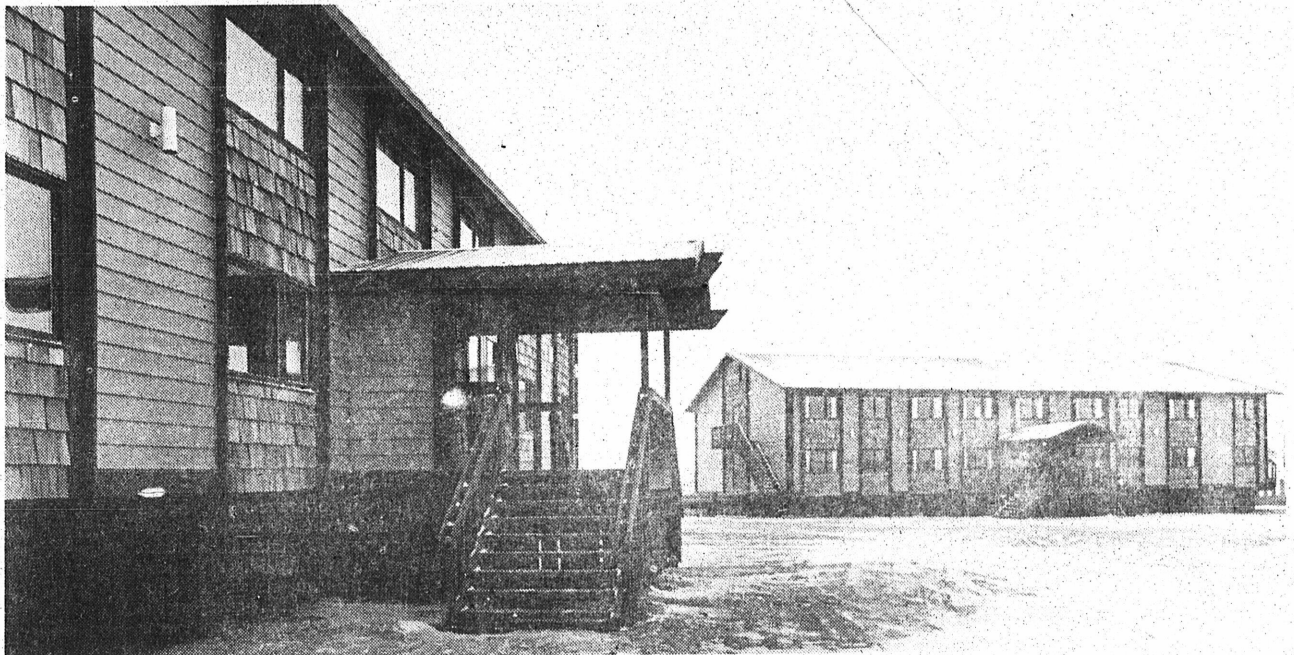


on the completion of  
**Bethel Native  
Corporation  
Hotel & Apartments**

- 21,000 square feet
- 40 units
- 23 efficiencies
- 12 one-bedrooms
- 5 two-bedrooms
- completed two months ahead of schedule

**Contractor - Tom Gittins**  
**Project Superintendent - Tom Langlie**

Bethel Mayor & President of BNC - Eddie Hoffman,  
with Tom Gittins.



**Custom Applicators**  
**Electric Service, Inc.**  
**Fuller O'Brien**  
**Guinn Lumber Co. - Bethel**  
**HAPCO**  
**Hewitt V. Lounsbury**  
**& Associates**  
**Interior Wall Systems**  
**McMahans Furniture &**  
**Appliance**  
**Noblecraft**

**Northern Insulation Co.**  
**P & R Drywall Co.**  
**Raven Mechanical**  
Ron's Plumbing / R. P. Voss Mechanical  
**Spenard Builder's Supply**  
**Stefano & Associates, Inc.,**  
**Consulting Engineers**  
**Stolt Electric Supply Co.**