

# REPORT DESCRIBES EROSION

A new open-file report by the U.S. Geological Survey presents descriptions of preconstruction conditions at selected channel sites along the southern segment of the Trans-Alaska Pipeline System from Flood Creek to Valdez, Alaska.

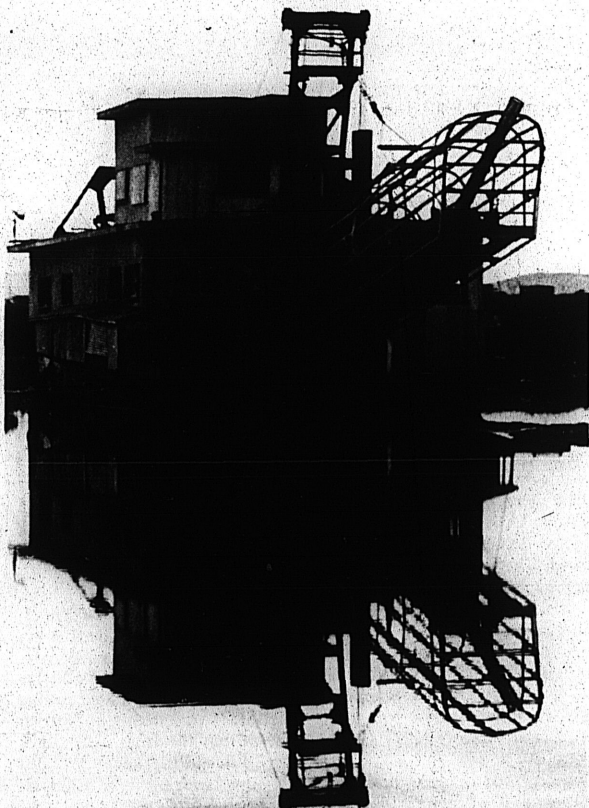
The information presented can be used in studies of severe channel erosion, streambed scour, bank erosion, or rechannelization.

The report also presents a plan for detecting and measuring significant erosion and the

important factors causing the erosion, such as flood discharge, icing development, and construction activities.

The title of this report is "Channel Erosion Surveys Along Southern Segment of the TAPS Route, Alaska, 1972 and 1973," by Joseph M. Childers.

The report and any questions or information about the report may be obtained from the Alaska District Chief, Water Resources Division, U.S. Geological Survey, 218 E Street, Anchorage, AK 99501.



**IDLE GOLD DREDGE** — This machine monster used to toil for gold around the vicinity of the historic City of Nome but it now lays quiet and still as if it expected to be reactivated. Gold was the main reason for the emergence of Nome and it may still be the jumping off point for the mineral search that has been going on in the Bering Sea city. It is also the seat of operation for the emerging Bering Straits Native Corp., the business arm of the Bering Straits Native Association.

— Photo by MARC OLSON