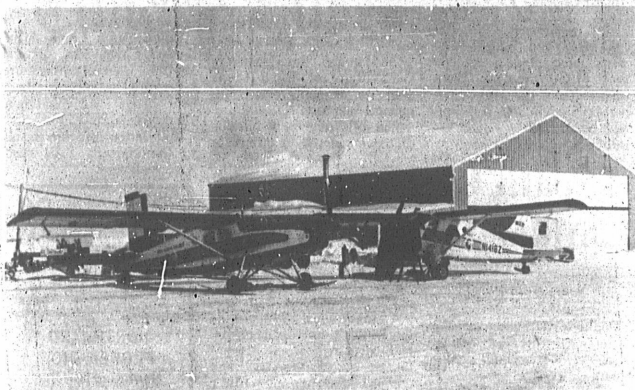


WIEN AIR DEDICATES HANGAR IN KOTZEBUE



WIEN KOTZEBUE HANGAR—An 80 by 80 foot steel structure in Kotzebue is the new Wien Air Alaska's hangar that is now servicing bush aircraft, most of them Pilatus

Porters used by the airline to service outlying villages out of Kotzebue.

—WIEN AIR PHOTO



PATIENTS AT KOTZEBUE HOSPITAL—Patients of the Kotzebue Native Service Hospital, along with the service personnel, are sitting to watch the Wienites, an entertain-

ment group of Wien Air Alaska, that performed at the hospital. The performance was a rare treat for the patients.

—WIEN AIR PHOTO



WIEN AIR OFFICIALS AND "WIENITES"—Wien Air Alaska officials, including Sigurd Wien, left, in a dark hat, from Fairbanks, and Nome, are at Kotzebue to dedicate the new

Wien hangar recently completed. In the group are members of the Wienites, the airline's entertainment group.

—WIEN AIR PHOTO

Entertainment at Native Hospital One of Highlights of Ceremonies in Arctic City

In a colorful ceremony last Friday, new Wien Air Alaska hangar was dedicated at the city of Kotzebue 25 miles within the Arctic Circle.

"It is the farthest north commercial hangar in Alaska," said Sigurd Wien, president of the airline.

About 300 people attended when Mayor John Cross of Kotzebue cut the ribbon opening the ceremonies that included a special cake, a party, a dance that lasted into the wee hours of the night with music furnished by Wienites, a group of citizens who play for the fun of it.

HOSPITAL TREAT

On the following day, Saturday, the Wienites entertained at the Kotzebue Native hospital much to the enjoyment of the patients there.

"The patients were just wonderful," said Betty Reeder vocalist for the Wienites. "Even the little ones, you know, the children, were clapping their hands."

"It was an unusual performance because they don't always have performances like that in Kotzebue," added Sig Wien.

There were ten members in the Wienite entertainment group, Ray Hiller, drummer; Eddie Krize, clarinet; Alex Klick, Hawaiian steel guitar; Bob Williams, electric guitar; Jack Osborn, electric bass;

Carl Carlson, accordion; Guy Elliott, banjo and vocalist; George Clayton, guitar and vocalist; Darlene Gillihan, dancer; and Betty Reeder, vocalist.

NOVEL CAB SERVICE

Before the ceremonies on Friday, a transportation problem developed because there was only one taxicab operating in the city. Since the hangar was quite some distance away from the town, some of the people had trouble getting to the dedication site.

"In order to get them to the hangar, we used a Pilatus Porter and taxied them eight at a time," said Skip Wall of the airline.

The new Kotzebue hangar is 80 by 80 feet with a 70-foot electrically operated door 20 feet high. It was built by Nordin Construction Co. at a cost of \$125,000.

The building is a steel structure with full rockwool insulation and it is oil heated. It was built to service the company's bush aircraft, mostly Pilatus Porters.

There is a freight storage in the hangar, passenger terminal and pilot briefing room. The planes can be loaded in the hangar with little delay.

"The hangar has reduced the company's operating expense and we have been needing it for 40 years," said Sig Wien.