



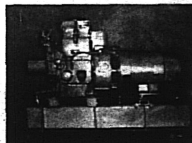
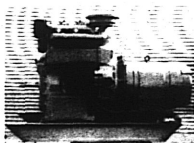
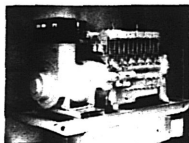
Offering

- Computerized Bookkeeping
- Annual Meeting Services
- Computerized Stockholder Recordkeeping Services

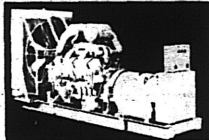
To ANCSA Village Corporations - Statewide

127 1/2 MINNIE ST.
Fairbanks, Alaska 99701
452-1601

Great Diesel Generating Names for a Great Land

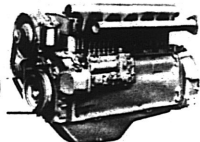


**VOLVO
PENTA**

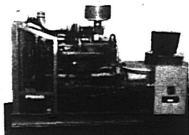


CUMMINS

**MIWIM
murphy
DIESELS**



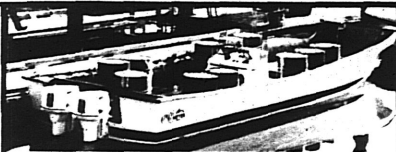
DETROIT DIESEL



JOHN DEERE

GREAT LINES FOR EVERY NEED

JOHN DEERE Power from 20KW to 150KW
LISTER Power from 4.4KW to 100KW
SUPERIOR POWER up to 10,000KW
MURPHY POWER up to 5,000KW
MURPHY POWER Single Phase or 3 Phase
VOLVO POWER up to 200KW
ELECTROMOTIVE EMD POWER
CUMMINS AND DETROIT DIESEL POWER
 Also 1200 RPM power for generation
 Custom Units on Request



ORCA opens the door to profits

Orca workboats are built to keep your costs low and profits high. Modern manufacturing techniques and no-frills construction mean low purchase cost. Slack shipping cuts transportation bills in half. Thick hand laid fiberglass, iron bark rub rails and other heavy duty construction features make an Orca nearly indestructible. Orca safety features protect your men and your wallet with foam filled, unsinkable hulls, self bailing decks and high gunnels.

The Orca Cargo has a water-tight bow door. Use it at water level as a work platform or on the beach as a 500 pound loading ramp. The Cargo comes in three sizes: 22x9 25x9 and 30x10.

The Orca Utilities have a pointed bow and short foredeck for a softer, dryer ride without sacrificing stability or carrying capacity. Optional davits are used for loading light cargo or brailing fish aboard. The Utility comes in 24x9, 27x9, and 30x10 foot sizes.

The Orca Bowpicker is the affordable 30x10 fishing machine for today's cost conscious fisherman. It's fast 27 mph with four cylinder I/Os. It will pack 155 cubic feet of fish hold. It's comfortable, twin bed, dinette, head and galley. The Bowpicker can be powered by the full range of Volvo Penta gas and diesel I/Os.

Alaska MARINE & EQUIPMENT
 1200 West International Airport Road • Anchorage, Alaska 99502 • (907) 276-1540

Yes... we install! Trained experts ready to go into the Field. Huge inventory of parts, call today - 276-1540 for information and prices.

**Diesel Powered
Flight Pumps**

**EMERGENCY
SERVICE
243-0539**

NORTHERN LIGHTS

**DIESEL ELECTRIC &
POWER SYSTEMS**

1200 W. International Airport Road
276-1540

CARRS
QUALITY CENTERS

SERVING
SOUTH CENTRAL
ALASKA

CARRS
PAYLESS
SUPERMARKET