

ALASKA METHODIST UNIVERSITY LOOKS To the Future



As if looking towards the future, AMU chorale sings joyously, expectantly

DR. WARREN BRYAN MARTIN, Provost of Raymond College of the University of the Pacific, and visiting Research Educator at the University of California, led an examination of student revolution during this year's University Institute at Alaska Methodist University.



'Dreams, Hard Work Laid the Foundation'

Alaska Methodist University, four miles out from downtown Anchorage, is a young institution with a broad outlook for Alaskan culture.

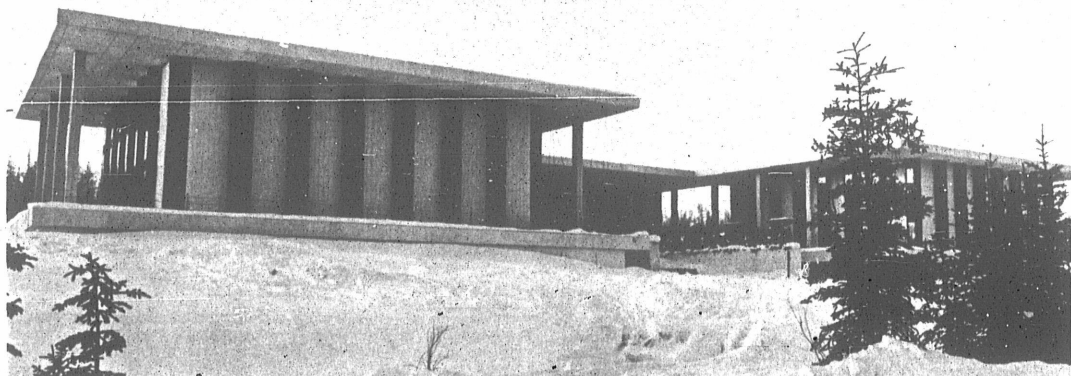
"Today," the Fact Sheet states, "the university provides the necessary background for the development of the mature liberal arts student and the successful candidate for professional and graduate schools."

"Famous lecturers appear in the university auditorium; numerous professional associations convene on campus; programs in science, art, music, and drama enrich academic life; and a lively cosmopolitan air permeates the university community."

Alaska's newest university was chartered in 1957 and the dedication of the campus took place on June 29, 1958, the day before Alaska became a state. The actual construction began in July, 1959.

"Dreams, plans, and hard work laid the foundation," said the spokesman of AMU. "The doors of the university opened in September, 1960, to 17 faculty members and 152 students."

In 1966, AMU opened the spring semester with an enrollment of 496 students. By 1970, it hopes to have 1,000 and by the turn of the century, 2,000 A.D., the enrollment is expected to be 5,000.



The new Student Union Building