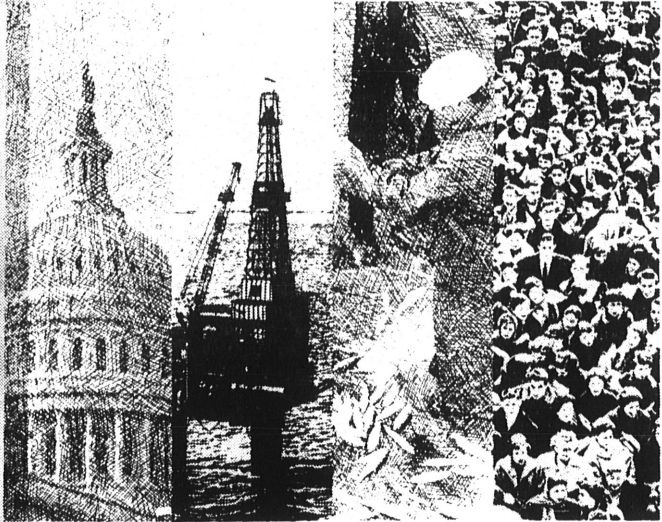
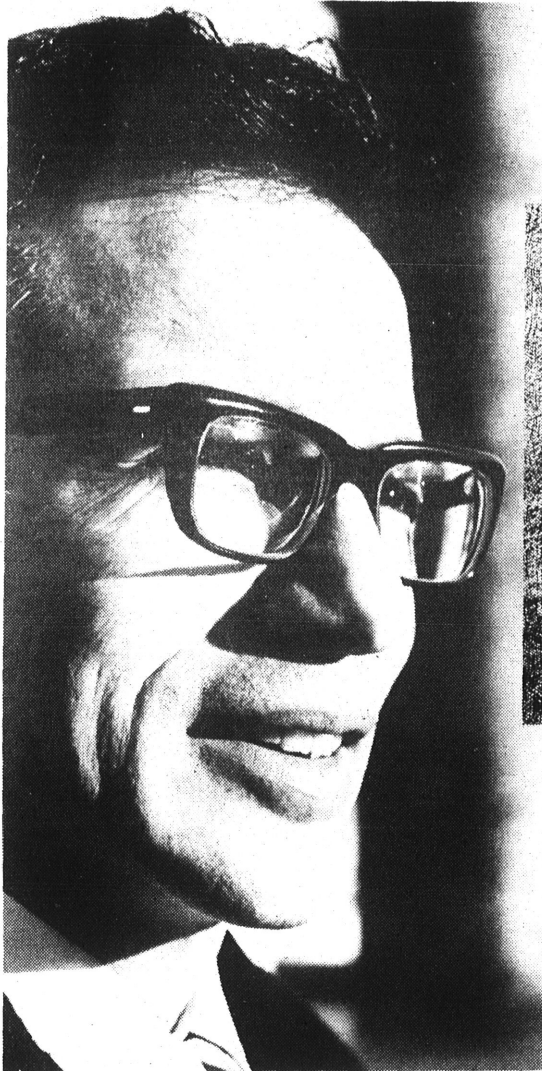


**want another  
hard-working  
congressman  
for alaska?**



Alaska's lone congressman must be effective. Alaskans look to him for all forms of assistance. The Democratic leadership in the House controls the flow of all legislation, thus Alaska's one congressman must be able to work with the majority party to be most effective for Alaska.

Emil Notti is an engineer so he understands the technical problems of the pipeline and he has the respect and friendship of those who can make it a reality. It is this balanced and informed approach which will get the pipeline most quickly for Alaska.

Emil Notti has worked as a commercial fisherman. He knows the problems of this traditional Alaskan industry and he will be effective in securing economic aid to our fishermen and protecting our fishing resources from foreign encroachment.

The foremost priority of government must be its sensitivity to the needs of its people. Emil Notti strongly feels that we must re-direct more of our resources to these human needs and will fight those proposed budget cuts which threaten Alaska's well being.

**EMIL**  
**NOTTI**  
**democrat**  
**for the tough years ahead**