

# Air Navigation Aid Installed Near Juneau-

## Alaska Airlines Installs Marker Beacon to Aid Pilots on Approach

JUNEAU — A navigation aid has been installed by Alaska Airlines to let pilots coming into Juneau Airport know exactly when they are above the west shoreline of Lynn Canal and will then have clear passage over water the remainder of the way, Governor William A. Egan said.

The aid, known as a marker

beacon, is located on the shoreline 15 miles west of the airport directly across Lynn Canal from Point Retreat. It sends up a radio beam that instantly provides pilots a positive fix for lowering their altitude for the descent into Juneau.

"The approach to Juneau Airport," said Egan, "has again

been upgraded with the installation of the marker beacon, which alerts pilots when they are past the mountains and is another positive safety aid for aircraft coming into Juneau."

He noted that a distance-measuring device, which constantly provides pilots their

exact mileage from the airport as they approach Juneau, had also been installed during the past year.

Egan said the marker beacon, with a self-contained power unit, is in operation and being flight tested by the Federal Aviation Administration "which hopes to

commission it for use by the end of the week."

He said the airline "has worked on getting this additional safety aid for a long time and is to be commended."

The third major navigation aid at Juneau Airport is a "localizer" unit which sends up a radio beam for pilots to follow down in descending to the airport.

## THE JEANE DIXON PREDICTIONS

Jeane Dixon's Midyear 1972 Predictions

By Jeane Dixon

© 1972 by The Chicago Tribune  
World Rights Reserved

In early November Miss MacLaine will experience a huge disappointment, but I encourage her not to give up because truly wonderful things are in

### INDIAN FRY BREAD

32 PIECES

4 cups flour  
4 tsp. baking powder  
1 tsp. salt  
¼ cup shortening  
¾ cups milk

Fat for frying.

Mix the first three ingredients. Cut in shortening, add enough milk to make a soft dough. Roll out on floured board, cut in pieces and fry in hot fat, turning once, until golden brown. Makes approx. 32 pieces.

store for her!

She is not ready to settle down yet. She will travel abroad a great deal. . . make more movies . . . and help Sen. McGovern in a fund-raising campaign to pay off his political debts.

This will prove rewarding for she will begin to rearrange her own spending habits, no longer spending money on some of the trivial accoutrements usually associated with glamorous movie stars. However, she will not trust others with her investment funds, but keep a sharp eye on them herself.

In 1974 I see her turning to civic and humanitarian activities in addition to her political ones. In this same year she will begin working to establish a home for orphans, illegitimate children and unwed mothers. This home, or hospital, will be a lasting

monument to her, and will be the outgrowth of her early work on abortion reforms and with mentally retarded children.

Miss MacLaine will one day be appointed to a high government office, and in 1977 will head her own political party.

Truly talented and many-faceted, this young lady is compassionate, original, loyal, hard-working . . . most of all, she thinks big! But unless she learns to temper enthusiasm and vigor with diplomacy and common sense, she will suffer some unnecessary setbacks. And, if she is not careful, she will lose a very valuable object, of intrinsic and sentimental worth.

Miss MacLaine will be married again, to a wealthy, socially

### CRANBERRY CHUTNEY

2 cups ground cranberries  
½ cup seedless raisins  
2 tablespoons finely chopped onion  
1 cup brown sugar  
2 tablespoons lemon juice  
1 teaspoon salt

Mix thoroughly. Refrigerate for 1 hour or more to blend flavor. Serve with meat.

For free sponsored  
16 MM film short subjects  
write Dick Norman  
at

**PICTURES, INC.**

811 8th Ave., Anchorage

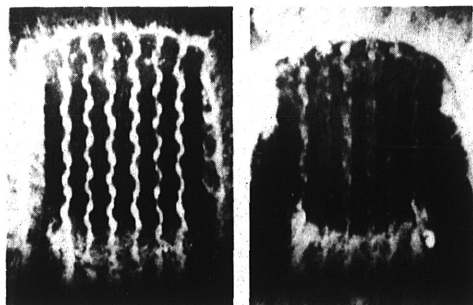
—Serving Alaska Since 1939—

### JOHN B. COGHILL

UNION OIL DISTRIBUTOR

for Tanana and Yukon River Villages  
also in the Nenana, Clear, Healy areas

P.O. BOX 268, NENANA, ALASKA



**HYDROPLANING**—These Tire Industry Safety Council photos show why a worn tire is more dangerous on wet roads. A new tire, at left, funnels out the water through its grooves, leaving the rubber in contact with the surface. Worn tire, at right, with only 1/16-inch of tread remaining and shallow grooves, is virtually skimming over a film of water in phenomenon called "hydroplaning."

Photos were shot at 1/1000th of a second as a car passed over a glass plate at 50 mph.

Source: Tire Industry Safety Council, Washington, D. C. 20004

### Dean's



AUTO GLASS & BODY SHOP

Authorized

Glass Installation

For All Makes of Cars

Complete Painting &

Body Work

320 2nd Ave. 452-1107



### ARTIST'S SUPPLIES

"Best Selection

In The  
North"

PICTURE FRAMES

—All Sizes

—Custom Made

—Ready Made

104 North Turner  
Fairbanks, Alaska (99701)  
(907) 456-5666

## 1st! MIDNIGHT SUN "600"

# Chaparral

From 22 HP to 46 HP - From \$795.00 to \$1375.00

CONTACT YOUR NEAREST VILLAGE DEALER  
OR

BETHEL POWER PRODUCTS  
BOX 565  
BETHEL, ALASKA 99559

WHEEL, WATER & TRACK SHACK  
1519 EAST 5TH  
ANCHORAGE, ALASKA 99501

SALES — SERVICE — PARTS

For Dealer Information — Contact "Scotty," Chaparral / Alaska, 1306 2nd Ave., Seattle, Washington 98101

## A banker you should know



Meet George Bell, our Director of Native Affairs and an experienced Northland banker. If you have questions on financial matters, he can provide the right answers.

You can reach him here:

MAIN OFFICE:  
NORTHWARD BUILDING  
FAIRBANKS, ALASKA  
PHONE (907) 456-6691

alaska national  
bank  
of the north



Member Federal Deposit Insurance Corporation and Federal Reserve System