

I WUZ ROBBED !

You probably were if you didn't stay at the:

TUDOR INN MOTEL

Single \$45. Double \$55. Weekly \$190.

ANCHORAGES BEST MOTEL VALUE

Color T.V.s & Phones, 380 + Square feet

Southeast corner Lake Otis & Tudor

561-2234

PUBLIC HEARINGS ON PROPOSED FINAL PHASE OF SELDOVIA/KACHEMAK BAY STATE PARK (KBSP) LAND EXCHANGE

The State of Alaska represented by the Department of Natural Resources (DNR) proposes to:

- reclassify state land
- close state land to mineral entry
- amend Susitna Area Plan
- exchange state land in Southcentral Alaska with Seldovia Native Association, Inc. (SNA) for the remainder of SNA-owned land in KBSP

STATE LAND POOLS

Kachemak Bay — 489 acres in 11 parcels
Kenai Peninsula — 4,708 acres in 121 parcels
Kalgin Island — 2,037 acres in 3 parcels
Granite Point area — 6,055 acres in 3 parcels
Beluga — 990 acres in 1 parcel
Mt. Susitna — 5,420 acres in 4 parcels

PUBLIC HEARINGS

SELDOVIATHURSDAY, DECEMBER 12
Community Library
Multipurpose Room
7 P.M.

HOMERTUESDAY, DECEMBER 17
High School Team
Teaching Room
7 P.M.

SOLDOTNAWEDNESDAY, DECEMBER 18
Borough Building
Assembly Room
148 North Binkley
7 P.M.

ANCHORAGETHURSDAY, DECEMBER 19
Wendler Jr. High
Multipurpose Room
7 P.M.

The public is invited to attend the hearings and comment on the proposed land exchange actions. Written comments, to be considered, must be received no later than January 3, 1986 and addressed to:

Tom Hawkins, Director
Department of Natural Resources
Division of Land & Water Management
Pouch 7-005, 555 Cordova St.
Anchorage, Alaska 99510

Printed information (including maps) describing the proposed actions is available at the DNR office above, and the following locations:

Municipal Offices — Homer, Kachemak City, Kenai, Seldovia, Soldotna, Tyonek
Public Libraries — Homer, Kenai, Soldotna
Post Offices — Anchor Point, Clam Gulch, Cooper Landing, English Bay, Homer, Kasilof, Kenai, Soldotna, Nikolski, Nikishka, Ninilchik, Palmer, Port Graham, Seldovia, Soldotna, Sterling, Tyonek, Wasilla.

For more information, please contact Dennis Daigger or Roger Burnside at the above address, telephone 561-2020.



Alaska Department of
**NATURAL
RESOURCES**

AO-10LMS/SPU 038

.....and when you just happen
to be in

HOOPER BAY,

stay at the

QAVARTARVIK

Hotel

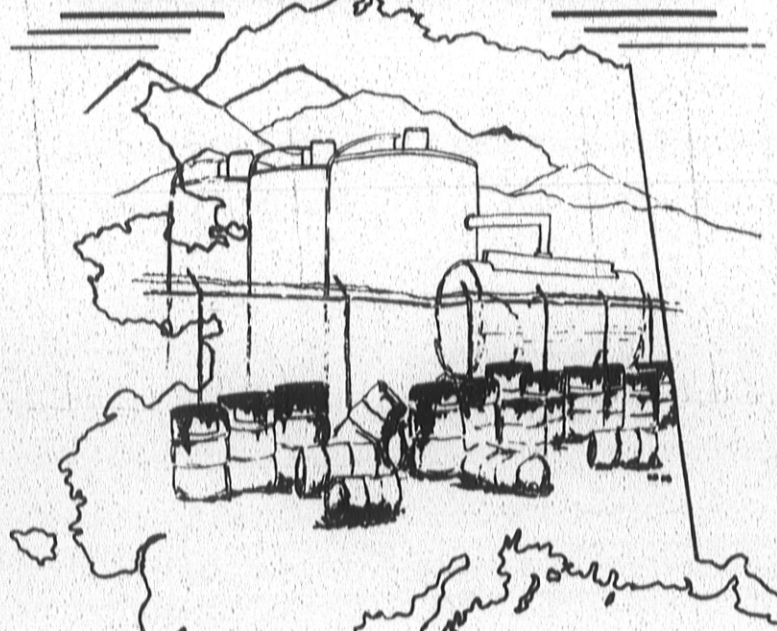
Reasonable winter rates, clean,
quiet and comfortable.

Rough it out comfortably whether
for business or
pleasure.

Call 758-4015 or 758-4415



HAZARDOUS WASTE:



The Alaska Department of Environmental Conservation
supports community involvement in hazardous waste
management & treatment/storage/disposal alternatives.

INVOLVE YOUR COMMUNITY

ATTEND THE PUBLIC PARTICIPATION WORKSHOPS
AND BE A PART OF THE SOLUTION

FAIRBANKS	Tuesday, December 3	Wood Center — Room 127 UAF Campus
BARROW	Thursday, December 5	Old Mark Air Terminal
JUNEAU	Monday, December 9	Hammond Room Centennial Hall
ANCHORAGE	Tuesday, December 10	East High School Cafeteria
KENAI	Wednesday, December 11	Kenai Borough Assembly Hall

MEETING TIMES	MEETING AGENDA
7:00 p.m. - 8:00 p.m.	☆ Overview of hazardous waste in Alaska.
	☆ Presentation on what DEC is doing about hazardous waste: six-point program.
8:00 p.m. - 9:00 p.m.	☆ Public participation: Discussions, Question and answer.

The best, the newest in
16 MM and in VHS cassettes
for your village movie shows
write JERRY VANDERGRIF

PICTURES, INC.

279-1515

811 W. 8th Ave.,
Anchorage, AK 99501
-Serving Alaska Since 1939-



Cross-Lites says:

These words were spoken
from Jesus, "Out of the
mouths of babes and
children thou has perfected
praise."

DISCOUNT COUPON USERS DON'T THROW MONEY AWAY!

SAVE hundreds of dollars a year on your food and household budget! Receive the wanted discount coupons on brand names of your choice. Hurry! You must enclose 2 stamped, self-addressed envelopes for easy details on how to save money at your local store.

COUPON WORLD

P.O. Box 18277
Milwaukee, Wisconsin 53218

Enclosed are 2 stamped, self-addressed envelopes.
Please send facts on joining the Club.

Name _____
Address _____
City _____ State _____ Zip _____

You must enclose 2 envelopes with stamps on them, addressed to yourself.