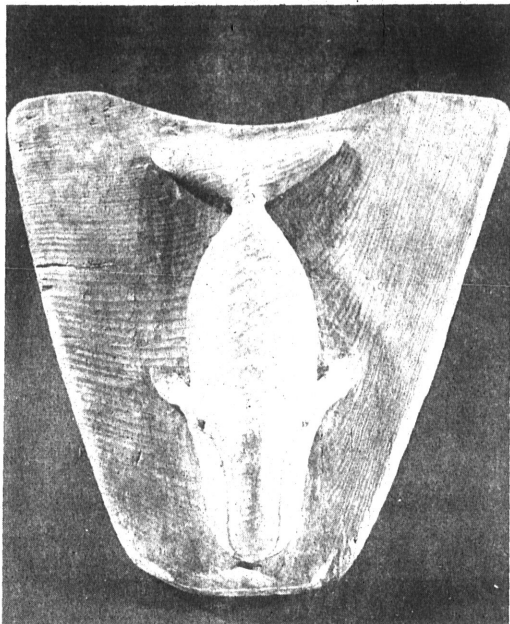


2,000 YEARS OF ESKIMO AND INDIAN ART

*Imposing Exhibition to Be Shown at Anchorage
Historical and Fine Arts Museum June 9- Sept. 9*



WHALE FETISH — (Eskimo) Lent to the National Gallery of Art
By the University Museum, Philadelphia.



SEA BEAR MASK — (Tlingit) Lent by the Museum of Primitive Art, New York.

FAR NORTH...

(continued from Page 1)

result is a beautiful and impressive testimony to the skill and artistry of native peoples from prehistoric times up to the end of the 19th century.

The objects include an extraordinary variety of masks and helmets; carved and painted chests, boxes, and split willow baskets; ceremonial headdresses with ermine cascades; costumes of sealskin, walrus-gut, and buckskin; rare beaded fishing hats; works of carved ivory; and a prehistoric burial mask.

The earliest objects are from the Okvik phase of prehistoric culture, and include some of the famous ivory "madonnas", considered to be among the most beautiful figures in primitive art.

Many of the objects from the Soviet Union have never been seen outside Russia and include some of the finest pieces in existence.

Bringing the Far North Exhibit to the Anchorage Historical and Fine Arts Museum was made possible through a grant from the National Endowment for the Humanities. The exhibit will open June 9 and will be on display through September 9.

The museum is located at 7th and A Street in Anchorage and viewing hours are from 9 A.M. to 8 P.M. Tuesday through Saturday, and 1 to 5 P.M. on Sundays.

The bringing together of these long-scattered works is a nostalgic homecoming for many beautiful pieces of Alaska native art.



ELABORATE MASK — (Eskimo) Lent by the Hambrugisches
Museum fur Volkerkunde und Vorgeschichte, Hamburg, Germany.



MASK WITH MOVING EYES — (Tlingit) Lent by the Museum
voor Laud en Volkenkunde, Rotterdam, The Netherlands.



ANVIK ESKIMO MASK — This unique mask was loaned to the
National Gallery of Art by Shelton Jackson Museum in Sitka.



BEAR HELMET — (Tlingit) Lent by the Museum of Anthropology
and Ethnography, Leningrad, USSR.