

## RCA Alascom

# Capsule/Communications Report

### MARINE/COASTAL RADIO

In response to new FCC regulations specifying the use of VHF and coastal harbor MF single side band radio equipment in Alaska, RCA Alascom has developed a new program for extensive revision of Alaska's maritime radio systems to improve service. Projects now underway call for upgrading five HF coastal harbor stations to meet the FCC requirement for single side band equipment, the addition of seven VHF stations, and the replacement of five MF coastal harbor stations with new VHF stations. The ultimate plan will provide 28 VHF stations for adequate coverage of the Alaska coastline.

### RECORD COMMUNICATIONS

RCA Alascom maintains some 18 public service counters throughout the state where telegraphic message service and money orders can be purchased. Telegraphic service is provided around the clock by telephone. In addition, RCA Alascom provides a wide range of record message services, including telex. This year, sophisticated new services are planned which will introduce Videovoice to Alaska and plans to make new message record services available to the contiguous states from Alaska by accessing the entire TWX network. RCA Alascom plans to tie in telexgram service with direct mail.

## SERVICES



Under the multi-million dollar Bush Telephone Program, telephone service was turned up for 20 remote rural Alaskan villages for the first time in history last year. Another 20 village telephones were installed to complete the first phase activities. This year, RCA Alascom engineers and technicians expect to install another 41 village telephones where none have been known since the beginning of time.

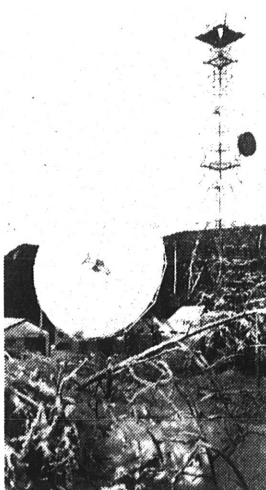
## BUSH TELEPHONE

RCA announced an agreement with Telesat Canada in December 1972 for utilization of the Canadian satellite. This interim measure to provide economical use of satellite circuits calls for two earth stations in Alaska and is expected to be implemented by the middle of 1973, pending authorizations and approvals.

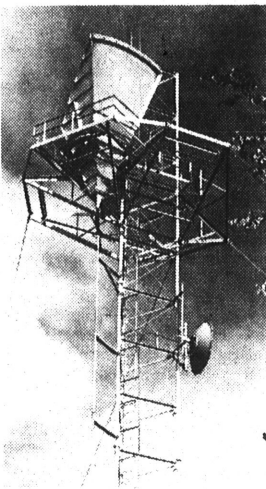
The RCA domestic satellite plan, filed with the FCC about the time of Alaska Communication System transfer, proposes initially the launching of three U. S. owned satellites in geostationary orbit and installation of five Alaska earth stations, including one in Fairbanks.

RCA Alascom installed its first earth station near Juneau in January. This made communications history by providing television transmission of the Governor's two addresses from the capitol. It also brought the Super Bowl to Juneau via satellite communications for the first time.

## SATELLITE



## LD COMMUNICATIONS



### MICROWAVE LINKS

Recognizing the critical shortage of long distance circuits, RCA Alascom stepped up activity in the installation of microwave links throughout the state during its second year of operation. Major projects launched in 1972 include planning and engineering of a new 960 channel Fairbanks Talkeetna microwave link with TV capability, the 1200 channel Anchorage Portage Seward microwave system with a cable link from Portage to Whittier, the 36 channel Dillingham King Salmon microwave system and the expansion of the existing Anchorage Talkeetna microwave system.

### LONG DISTANCE TELEPHONE

More Alaskans are making more long distance calls today than any other time in history. Alaskans made some seven million long distance calls last year — up 90 percent over the 1969 total. This year Alaskans are expected to shatter the record with an estimated 8.5 million LD calls — up 130 percent over 1969 LD calls.

### SWITCHING

To keep pace, RCA Alascom has moved about \$2.5 million of new switching equipment into toll centers located in Anchorage, Fairbanks, Juneau and Ketchikan last year. In 1973, over another \$3 million will be invested in switching installations. DDD was introduced to the state in Anchorage and Fairbanks in 1972. These major population areas originate about 80 percent of the LD calls in Alaska.



## FUTURE

Long range communication plans will usher in an era where the telephone, television and radio will enter almost every Alaskan home as a common household staple. Alaska now stands on the threshold of low-cost satellite communications, and in a diversified systems approach, RCA Alascom is planning and engineering terrestrial systems that can be readily integrated into domestic satellite systems of the future. Considering the urgency of immediate communication needs and practical long range application, RCA Alascom has embarked on a comprehensive communications program formulated specifically for the Great Land and Alaskans throughout the state.