

The Alaska Commercial Company.

Congratulations from a hardworking crew.

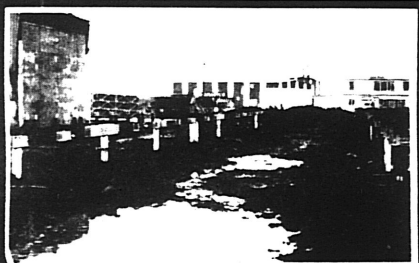
Gittins Construction Company and the Community of Bethel accomplished in five short months what some felt couldn't be done.

In June 1980 there was tundra and water.

Now, less than a half-year later, stands the

50,000 sq. foot Bethel Center and Alaska Commercial Co., built ahead of schedule and with over 85% native hire.

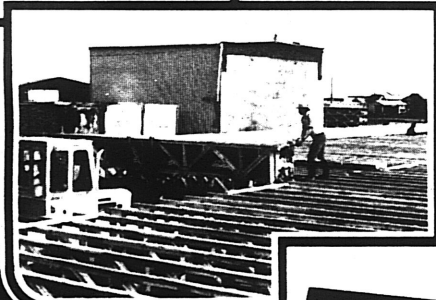
**June 1980...
tundra and water.**



It takes a dedicated crew to accomplish this. But it takes more than just dedication . . . it takes cooperation between the community and the construction company and a healthy respect for the knowledge and insight that each can give the other.

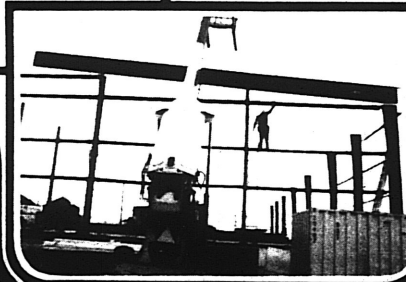
Congratulations to The Alaska Commercial Company and the Community of Bethel from Gittins Construction.

Working together, we did it.



**GITTINS
CONSTRUCTION
INCORPORATED**

GENERAL CONTRACTORS
1011 E. TUDOR ROAD
ANCHORAGE, ALASKA 99503



Photos by Glen



October 1980... The Bethel Center.

