

Leaves KCC out in the cold—

State cuts UA regents budget

The Governor's Budget Review Committee has slashed the University of Alaska Board of Regents' budget request for the Kuskokwim Community College by 38.9%.

The cut of almost \$1 million dollars in operating funds for the college may severely cut activities by the Yup'ik Language Workshop and cripple the Instructional Television Program run by the college producing almost six hours of classes a day.

According to KCC officials, a number of instruction positions and programs will have to be cut back or cut out entirely if the budget is not fully funded. Of special concern to the college are the deletion of the Instructional Television Production staff and the production staff at the Eskimo Language Workshop.

Adult education and college courses can reach a large number of people over a great distance more economically than equivalent on-site classes. The loss of ITV production capability would render this system inoperable for instructional television.

The Eskimo Language workshop, which services bilingual programs in the area, has been left with a coordinator, but no staff. Currently, it is the only language center which serves the Yup'ik Eskimo Language, which is the primary language for most of the area's residents.

Unlike Anchorage and other urban campuses that are suffering a steady or declining enrollment, KCC has grown rapidly over the past three-and-one-half years. The Anchorage Community College budget request in excess of \$8 million dollars was cut by the governor's committee only 7%.

The Kuskokwim Community College differs from older community colleges not only in terms of rapidly growing student population, but also in terms of complexity of its delivery system. About half of KCC's



LEARNING MAINTENANCE—Here students at the Kuskokwim Community College are learning building maintenance trades at the workshop of the KCC facility.

students reside in the 53 villages of the AVCP region, an area of over 60,000 square miles.

Eighty percent of the enrolled students at KCC are Natives, while Anchorage has a Native enrollment of just 3.3% and MAT-SU Community College has just 1.2%. Yet the MAT-SU budget request was cut 2.95%, the lowest of any by the governor's committee.

"KCC has taken on the largest challenge of a community college in the state in providing course delivery," said Acting Director Dr. Jan Gibson, and "Instructor visits to villages and preparation of course materials for remote delivery take extra faculty time."

Localized higher and adult education for Native and other rural Alaskans is just now becoming a reality, and it is an inappropriate time to cut back services."

Gibson said the governor's request does not allow for stabilization of any programs which were started with seed money through grants and contracts.

Agencies within the Bethel area have assisted the college in starting training programs which are badly needed in the AVCP region, with the hope that the State Legislature would begin to assume some of the responsibility for funding the programs as the student population was developed.

Programs to train Licensed Practical Nurses with the cooperation of the Yukon-Kuskokwim Health Corporation, building trades and maintenance programs, office skills, land resource management and teacher-aide training programs that offer an AA degree and afford the student the possibility of continuing education to obtain a BA may be jeopardized by this cut.

"We just cannot live with this drastic budget loss," said Gibson, "the governor's committee simply did not recognize the fact that KCC operated last year on less than

\$1 million dollars of state money. Over half of our budget came from other sources.

Some of those sources are non-renewable. We cannot operate needed, ongoing programs at the whims of federal and other agency funding. That is not good for the people of this region."

The following is a list of community college requests, percentage cuts and Native enrollment percentages:

Kodiak Community College—Regent's Submission, \$903,600; Governor's Recommendation, \$837,900; Percent Cut, 7.3%; Percent Native Enrollment, 8.7%.

Kenai Community College—Regent's Submission, \$837,600; Governor's Recommendation, \$774,100; Percent Cut, 7.6%; Percent Native Enrollment, 5.5%.

Northwest Community College—Regent's Submission, \$410,000; Governor's Recommendation, \$240,100; Percent Cut, 41.4%; Percent Native Enrollment, not available.

Kuskokwim Community College—Regent's Submission, \$2,444,600; Governor's Recommendation, \$1,491,400; Percent Cut, 38.9%; Percent Native Enrollment, 62.9%, does not include village enrollment.

Anchorage Community College—Regent's Submission, \$8,636,200; Governor's Recommendation, \$8,023,900; Percent Cut, 7.0%; Percent Native Enrollment, 3.3%.

Mat-Su Community

ALASKA CENTRAL AIR

formerly Tanana Air Taxi

456-4411 or 452-4797

ALASKA CENTRAL AIR
SCHEDULED AIR SERVICE FROM THE HEART OF ALASKA

For dental assistants—

SJC takes applicants

The Indian Health Service—Sheldon Jackson College Dental Assistant Training Program at Mt. Edgecumbe, Alaska, is now taking applications for enrollment in the Class of 77, which will begin in September of 1976.

Applicants should be at least one-quarter degree Indian or Alaskan Native and be a high school graduate or have completed a high school equivalency test. The program is 9-months in duration with the student receiving 34 college credits upon completion. The Indian Health Service will assist graduates in locating employment opportunities.

College—Regent's Submission, \$1,353,700; Governor's Recommendation, \$1,313,700; Percent Cut, 2.95%; Percent Native Enrollment, 1.2%.

If you have an interest in meeting and serving the public, a desire to help people, and would like to obtain more information and an application for this program, write to: IHS-Sheldon Jackson College Dental Assistant Training Program, P.O. Box 577, Mt. Edgecumbe, Alaska 99835, today.



There's a word for the fear of the number thirteen. It's triskaidekaphobia, from the Greek, of course.

NEW CARS and TRUCKS

ALL MAKES—IMMEDIATE DELIVERY

SEATTLE—SAN FRANCISCO
LOS ANGELES
HAWAII—ALASKA

LOWEST POSSIBLE PRICES
FINANCING & LEASING OAC

No Sales Tax

Write for Information and Price Lists.
Please Specify Make,
Model and Equipment.

ROBERTS & REDFIELD

2108 West Burnside
P.O. Box 10507
Portland, Oregon 97210
(503) 222-1617

BIG RAY'S SURPLUS

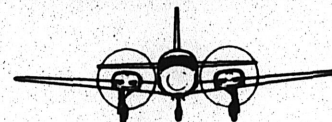
Send for Our Free Catalog

Top Value at Low Prices

452-3458
507 2nd Avenue

Harold's Air Service

GALENA and RUBY, ALASKA



John Billings

Manager

Box 65, Galena

656-1251 or 656-1234

Charter & Contract Flying
Single and Multi-Engine

Harold Esmailka

Owner

Ruby, Alaska

TUNDRA TIMES

a nonpartisan newspaper that goes throughout the State of Alaska, all the other 49 states, territories.

TUNDRA TIMES GOES TO OVER 170 VILLAGES, TOWNS AND CITIES ALL OVER THE STATE

We are saying that businesses in Alaska can reach a lot of places through advertising.

The rural areas of our state are in need of something useful for which they can send

And that is through advertising

Try the mutual benefit approach

Advertise!

TUNDRA TIMES

Box 1287, Fairbanks, Alaska 99707



Mail orders welcome
Custom made nugget jewelry
Watch repair

Perdue Jewelry

706 Noble • 456-5105

AL WRIGHT'S AIR SERVICE

—charter service
—Alaska & Canada
—single & multi-engine
—fish-duck camp

—Floats—Wheels—Skis—
WRITE OR CALL

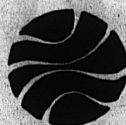
AL WRIGHT OR
BOB BURSIEL
Airport East Ramp
456-5502

JOHN B. COGHILL

UNION OIL DISTRIBUTOR

for Tanana and Yukon River Villages
also in the Nenana, Clear, Healy areas

P.O. BOX 268, NENANA, ALASKA



Energy Company of Alaska
An Earth Resources Company

P.O. Box 1070, Fairbanks