

# Native village will highlight State Fair

by Steve Kakaruk  
Tundra Times

Kildeh nildalggey!! — a Taininen phrase meaning, "we're going to have a get together". The Mat-Su/JOM State Fair Committee will present the first authentic Native Village at the Alaska State Fair on Hermon Brothers Field. Grace Butler, Johnson O'Malley Parent Com-

mittee Chairman for the Mat-Su Community, is the JOM/State Fair Project Sub-Committee Chairman.

basic skills in traditional arctic survival and story telling. Featured guests, Timothy and Anna Golodergin, Nick and Lucille Wongittlin from Nome will direct the construction of a skinshelter used on the St. Lawrence Islands used during hunting and travel by the Siberian Yupik Eskimos.

"Traveling in the summer and winter required two sizes of skin

*"Kildeh nildalggey" — we're going to have a get-together*

mittee Chairman for the Mat-Su Community, is the JOM/State Fair Project Sub-Committee Chairman.

"This is an especially great thing for the students, our future; for the first time, every student will have the opportunity to work with people from different cultures and help to show what life in the villages is like."

Joe Cantil, Activities Coordinator and JOM/State Fair Committee Member said that this is the first year a Native Village

shelters," says Timothy Golodergin. The shelter built for the Native Village will be a summer shelter.

Rita Blumenstein will demonstrate traditional Native basket weaving and offer storytelling for any and all interested. Linda McKinney will demonstrate her talent in Athabascan beadwork. Students will demonstrate the *nalukatuq* or blanket toss and Native Youth Olympic games.

Shem Pete, a 97-year-old Ta-

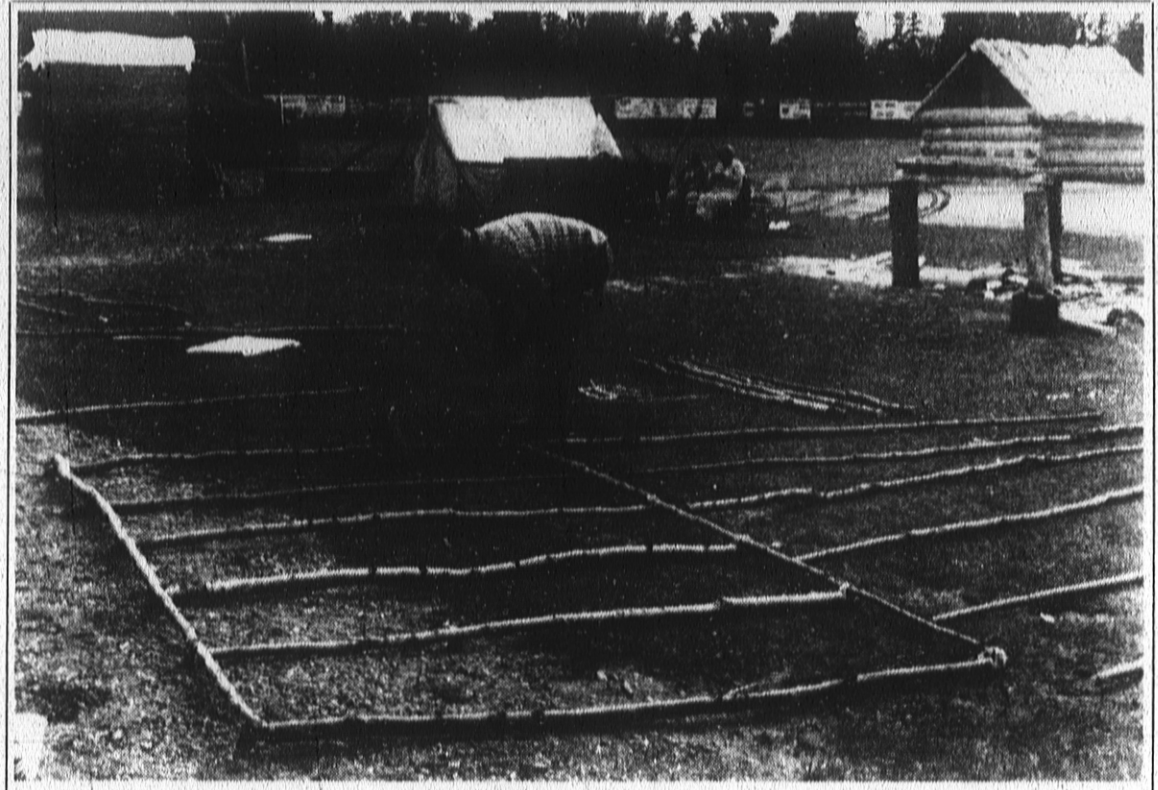
nainen Athabascan, and foremost authority on history and geographic place names within the Mat-Su/Upper Cook Inlet area will answer questions on the background of villages of the

region.

Sonny and Leah Tuttle, Oglala Sioux Dancers will be in attendance at the Fair, arriving from Spokane, WA. Sonny Tuttle organized the Expo '74 Worlds Fair's first Native Village in Seattle. Tuttle was asked to help organize the first Native Village at the Alaska State Fair, an addition to the Fair organizers hope to make an annual event. Tuttle said, "This is the first step to having an annual event. If successful, and I see it for the future as a very

from Spokane, the Oglala Sioux Dancers.

JOM Mat-Su Valley students and volunteers will provide food, lodging and transportation to all registered participants, as is customary of those hosting an event like this. The Native Village will consist of Tipis, arbors, Siberian Yupik Skin Shelters, smoke houses, fish camp shelters and fish racks. The JOM Mat-Su Parent Committee estimates that 100 of their students will construct the village



Timothy Golodergin prepare a frame wall made of aspen for a skin shelter.

photo by Steve Kakaruk



Sonny Tuttle (front), Oglala Sioux Dancer, and Mat-Su/JOM State Fair student volunteers prepare aspen poles for use on arbors and shelters to be constructed at the State Fair in Palmer.

photo by Steve Kakaruk

*"This is an especially great thing for students..."*

successfull event, it will carry over and generate more interest for future years as it has in Seattle."

Dance groups will perform from 1:30 to 3:00 p.m., 4:30 to 6:00 p.m. and 7:30 to 9:00 p.m. Groups scheduled to perform are: The CINA/Greatland Traditional Dancers, Nunampta Yupik Dancers, Northern Lights Powwow Club, Tyonek Dancers, Shageluk Dancers and a group

and participate in the two-week event.

Events will begin with opening ceremonies at the Native Village at 1:30 p.m. August 24th. Workshops and demonstrations will be offered during the fair and the closing ceremonies will take place at the Village on September 1 at 1:30 p.m.