

# Fed. Field Committee Publishes Alaska Community Inventory

"Alaska Community Inventory" published by the Federal Field Committee for Development Planning in Alaska this month will be a welcome addition to research libraries.

It includes a profile of all Alaskan communities of from 25 to 5,000 people except uninhabited suburbs of urban areas and military stations.

The book is a compilation of material from government agencies including U.S. Census Alaska Village Electric Cooperative, Alaska State Housing Authority, Farmers Home Administration, Bureau of Land Management and the Bureau of Indian Affairs.

"In cases where discrepancies were noted, the latest information was used, or the conflict was resolved by checking other sources," the report notes.

"Where population or housing data differed from the U.S. Cen-

sus report, the Census figures were used. We believe this report summarizes the latest and best information available as of June 1, 1971."

The inventory covers 231 communities arranged in alphabetical order with one page for each community. The report on Ambler is typical.

## AMBLER

1960 population, 70.  
1970 population, 169.  
Native population, 159.  
Percentage Native, 94 per cent.

Form of government, Traditional Village.

Borough, Unorganized.

U.S. Census Division, Kobuk.

PHYSICAL FACILITIES

Water supply—river

Water distribution—No

Sewer system—No

Sewage treatment—No

Electric power—5KW Generator.

Power source—Diesel  
Distribution system—Private  
Homes connected—15  
TRANSPORTATION  
FACILITIES

Connections

Road

Airport—Scheduled airline service, 1,700 foot dirt strip.

Dock

Ferry Service Barge

HOUSING

Total units—33

New units built—16 mutual

help.

Units estimated substandard

12.

SCHOOLS

Type—Rural  
Enrollment—44  
Grades covered—1 through 8  
COMMUNITY FACILITIES  
Community center—Yes

Library

Hotel Services—None

Rural CAP Dev. Corp. office at Kotzebue.

GOVERNMENT  
INSTALLATIONS

Federal—USPS

State—Yes

Military—No

COMMUNITY SURVEYS

Townsite survey—Aug.-Oct.

1966.

Comprehensive Plan—No

Overall Economic Development Plan—No

PHYSICAL HAZARDS

Flood hazard—High; Stream

overflow.

Permafrost—Yes

Erosion hazard—Yes

OTHER

Business places—3

Economic base—Subsistence

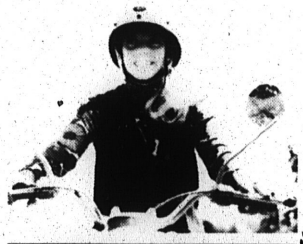


## carry a bank in your pocket

When you tuck an NBA checkbook in your pocket, we go where you go.

If you run across a great bargain—buy it. If you like to pay your bills in person—do it. If you like the idea of having emergency money with you at all times—carry it.

Together we can do almost anything. It's more than a checkbook you're carrying—you've got the whole bank in your pocket. That may seem like a weighty idea... but you'd be surprised how we can lighten your load.



We're here on YOUR account!

## NATIONAL Bank of Alaska

Member Federal Deposit Insurance Corporation

## BOOKKEEPING SERVICE

FRIEDA MACKOWIAK

14 Mile Nenana Road, P.O. Box 132  
Fairbanks, Alaska 99701

**Payrolls, Bookkeeping, Tax Planning, Income Tax Service**

## JOHN B. COGHILL

UNION OIL DISTRIBUTOR

for Tanana and Yukon River Villages  
also in the Nenana, Clear, Healy areas

P.O. BOX 268, NENANA, ALASKA



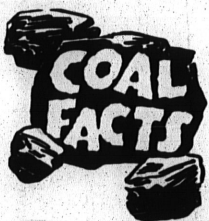
## SAVOY BAR

423 2nd

OWNER: CURLY LEVI

MANAGER: TOMMY FULLER

**Delightfully Unique !**



- Clean
- Economical
- an Alaskan Industry

DID YOU KNOW

You can burn coal for half the cost of any other fuel?

## USIBELLI COAL MINE, INC.

Office  
270 Illinois St.

Dial 456-5005

Alaska  
Railroad Area

## LUMBER & BUILDING MATERIALS

BUY WHERE YOUR DOLLAR GOES FARTHER!

## PLYWOOD

Building Materials of All Types

## PRE-FAB HOMES

All Sizes

## PLUMBING AND ELECTRICAL SUPPLIES

COLUMBIA TRANSPORTATION

1110 West Ewing

Seattle, Washington 98119

PHONE: 206-283-6100