

CAPITAL SITE SELECTION COMMITTEE

The selection of a capital site will soon be in your hands.

A choice to consider...

When you go to the polls to vote for a new capital site, these are some of the issues you might consider: what type of city do you want for a new capital? What type of regional impact would you accept? What cost are you willing to bear?

On December 5, 1975 after a year-long study, the Capital Site Selection Committee selected three potential sites for the location of Alaska's new capital city. These sites were chosen on the basis of a carefully structured evaluation process covering an analysis of land ownership, environmental suitability, transportation and utility requirements, regional impacts, scenic features and development opportunities.

With the selection of three sites, the Committee now passes on to you, the Alaska voter, the task of making the final decision

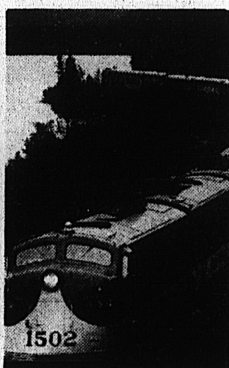
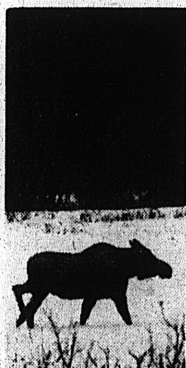
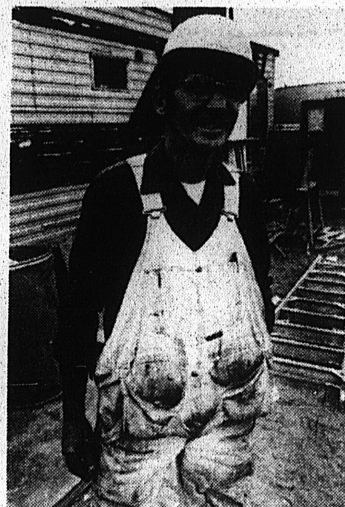
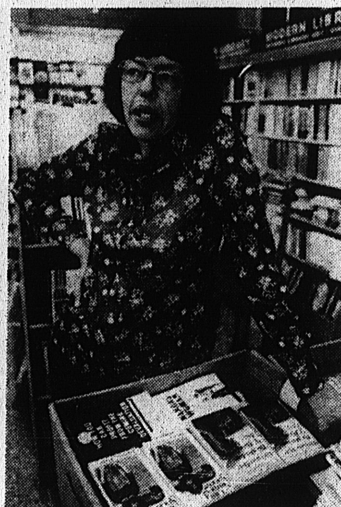
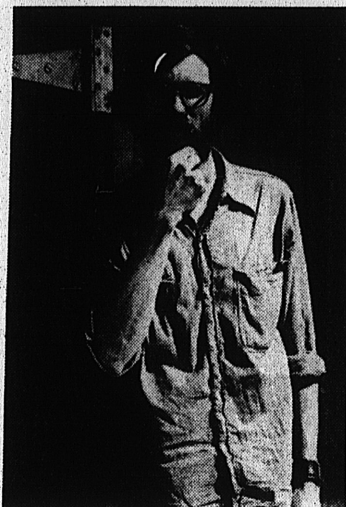
on where the new capital will be located. You will be choosing among three sites which meet the requirements of the Capital Relocation Initiative and are well-suited for development from the standpoint of natural and environmental factors, scenic and natural resources, accessibility and utility requirements. In addition, the three sites have been selected to provide clearly different options to the Alaska voter.

The Willow site lies adjacent to the Anchorage-Fairbanks Highway and the railbelt. It provides a location closer to Anchorage, the major population center of the State. Because of this location it would have a slightly lower development cost than any of the sites. The site offers a panoramic view of Mt. McKinley and the Susitna Valley.

The Larson Lake site also is adjacent to the railbelt (thereby insuring low development costs), but in a location more central to existing centers of population. It is a site surrounded by beautiful natural features.

The Mt. Yenlo site provides a development city option. The site is located 45 miles from the railbelt in an area with natural resources and agricultural potential. The potential location of the new capital city, provides the opportunity to open up the entire Western Susitna Valley for development.

As you can see, these sites provide you with three different options. The final decision will affect Alaskans in the near future and for generations to come. We urge you to read the information presented here and to carefully consider your vote.



ADVERTISING
SUPPLEMENT TO:

Anchorage Daily Times
Anchorage Daily News
Fairbanks Daily News-Miner
Southeast Alaska Empire

Ketchikan Daily News
Sitka Sentinel
Kodiak Mirror
Homer News

Valdez Copper Basin News
Petersburg Pilot
Wrangell Sentinel
Seward Phoenix Log

Peninsula Clarion
Nome Nugget
Cordova Times
Tundra Times

Pioneer All Alaska Weekly
Palmer Frontiersman
Tundra Drums
The North Wind