

THE CAPITAL SITE SELECTION PROCESS



More than 540,000 square miles of land are located in Western Alaska west of Meridian 141 degrees longitude, the area specified by the Initiative as the location of the new capital. This vast land area encompasses all the land from the North Slope to the Alaska Peninsula, and all of the land west of the Canadian border to the Bering Sea.

As its first step, the Capital Site Selection Committee named a project team consisting of Alaskan based consulting firms in the fields of planning, environmental and applied earth sciences, transportation, and public information/participation; and a scientific resource team consisting of scientists from state and federal agencies.

No precedent existed for selecting a new capital site, and a new and very special process had to be designed. Perhaps the most significant challenge to this process was the extraordinarily tight time frame established by the Initiative within which the Committee would have to select up to three sites in a manner which was fully responsive to the mandate of the Alaskan voters.

To accomplish this undertaking the Committee developed a four phase work plan. Each of the phases was designed to focus in greater and greater detail on fewer and fewer potential sites. At the end of each phase, the work plan was reviewed by the Capital Site Selection Committee and adjusted to include

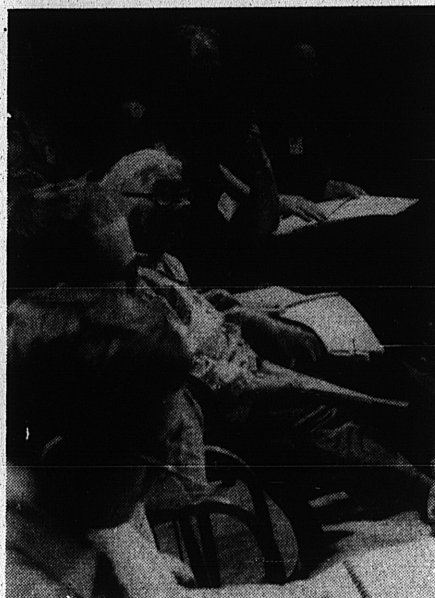
additional information gathered during the course of the work.

The work program was also designed to include a high level of citizen participation and input in every stage of the site selection process. The Committee's work involved distributing a wide range of information in

statewide public media, the publishing of periodic newsletters and special reports, through speeches by Committee members, and the scheduling of public committee meetings in cities throughout the state.

To gain citizen input, a special type of program was designed to step beyond the public hearing process and insure participation from a wide range of citizens. A series of hearing/workshops were held by the Committee in eight geographic regions of the state. Representative samples of residents in each community were contacted either by telephone or in person and specifically invited to attend the hearing/workshop. In addition the hearings were widely publicized and participation by all local residents was encouraged. The workshops contributed greatly to the issues which were analyzed during the course of the site selection process.

(continued to back page)



CAPITAL SITE SELECTION COMMITTEE

Hensley, William L., Chairman <i>Kotzebue</i>	Carlson, Dwayne, Vice Chairman <i>Anchorage</i>
Bettisworth, Charles <i>Ketchikan</i>	Cook, Earl <i>Fairbanks</i>
Corbus, William A. <i>Juneau</i>	Kellogg, V. Louise <i>Palmer</i>
	Sturgulewski, Arliss <i>Anchorage</i>
	Ward, Austin G. <i>Fairbanks</i>
Martin, Guy M., Commissioner of Natural Resources <i>Juneau</i>	

STAFF

Leonard D. Lane	<i>Executive Director</i>
Judy Tessier	<i>Administrative Assistant</i>
Pam Ronning	<i>Secretary</i>

PROJECT TEAM

CONSULTANTS:

Crittenden Cassetta, Cannon/Helmuth, Obata & Kassabaum (CCC/HOK)
Dames & Moore
Alan M. Voorhees & Associates, Inc.
The Rowan Group
Kish-Tu
Hanscomb & Associates
Institute of Social Economic and Government Research
Homan and McDowell Associates
Tom Shackle
Doug McConnel

SCIENTIFIC RESOURCE TEAM:

United States Geological Survey
Department of Natural Resources, Division of Lands
Department of Fish and Game
Institute of Social Economic and Government Research, University of Alaska
U.S. Department of Agriculture, Soil Conservation Services
Federal/State Land Use Planning Commission
Department of Environmental Conservation
Geophysical Institute, ERTS DATA
Arctic Environmental Institute Data Center, University of Alaska
Bureau of Land Management, Corridor Planning team